

MC260 Capsule Slip Rings



MC260 slip rings are small and compact with OD 22mm * L 26mm, with capsule style, standard, off-the-shelf. Color-coded lead wires are used on both the stator and rotor for simplified electrical connections. Using a 90° V-groove ring design for each ring. MC2609 is the high-end version corresponding to MC260, It has higher performance and longer working life, higher speed rotating speed, low noise.

Part# Explanation

MC 260(9)-FL01

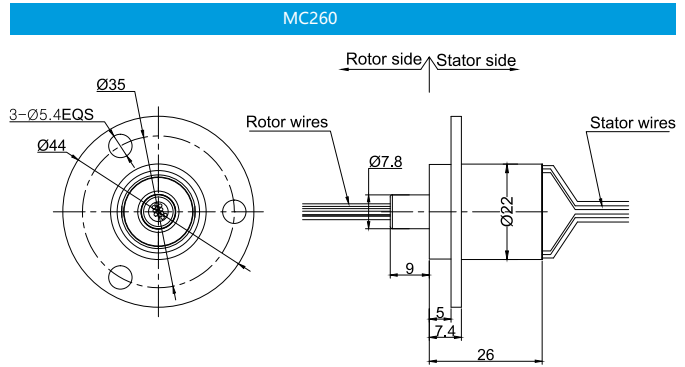
MC : capsule slip ring

260 : common quality version

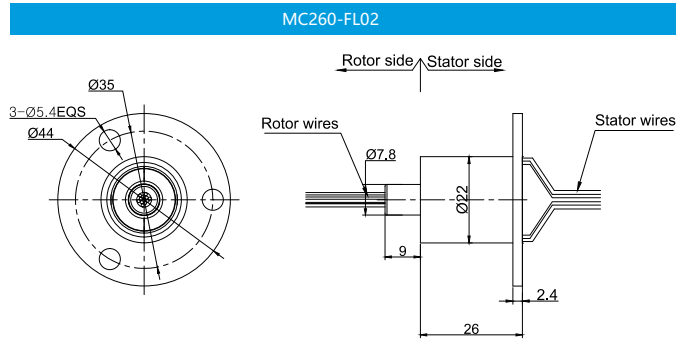
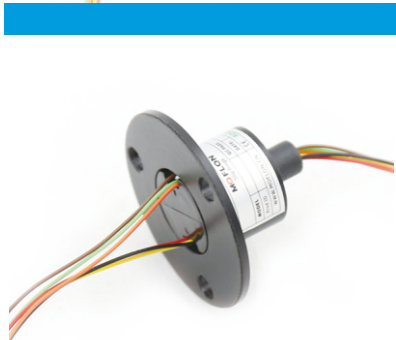
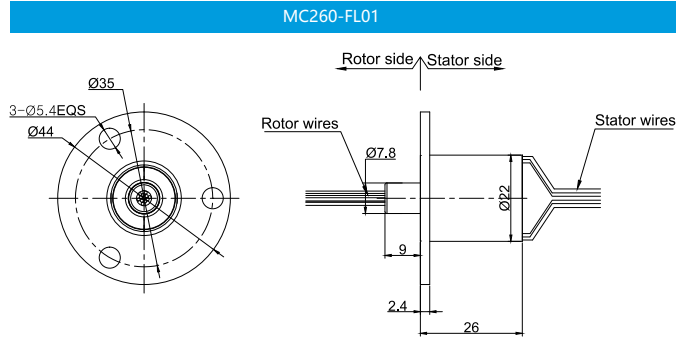
2609 : high-end quality version

FL01: flange type

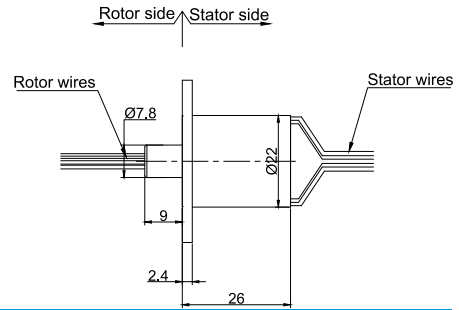
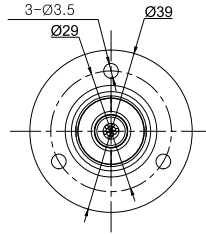
Standard Model



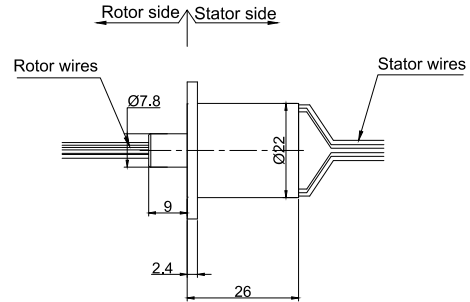
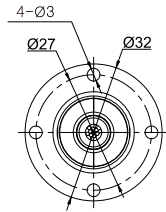
Optional Flange Model



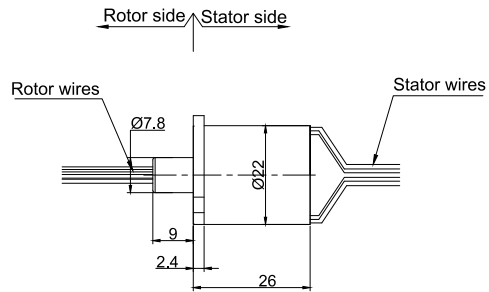
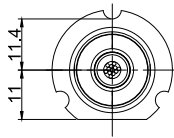
MC260-FL03



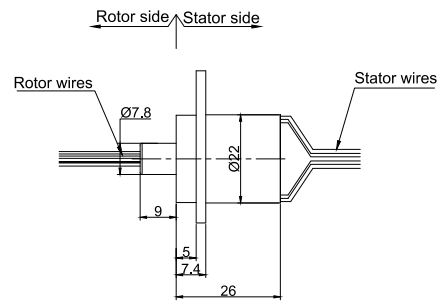
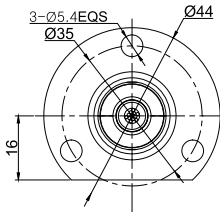
MC260-FL04



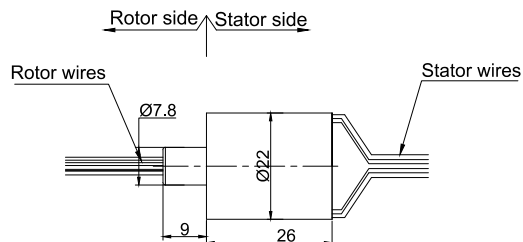
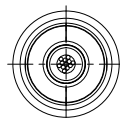
MC260-FL05



MC260-FL06



MC260-FL07



Part# List

MC260 Series Parts# List					
Part#	Signal/2A	4A	8A	15A	Total Wires
MC260	12	0	0	0	12
MC260-P0304-S06	6	3	0	0	9
MC260-P0208-S02	2	0	2	0	4
MC260-P0308	0	0	3	0	3

Note: N channels 2A rings parallel can be used as 1 channel $N \times 2A$ current. For example: 2 rings 2A parallel could be used as 1 wires 4A ,please contact sales for special requirements

Specification

Electrical Data		
Parameter	Value	
	Power	Signal
Rated Voltage	0~240VAC/VDC	0~240VAC/VDC
Insulation Resistance	$\geq 100M\Omega/500VDC$	$\geq 100M\Omega/500VDC$
Lead Wires	AWG#28 teflon	AWG#28 teflon
Lead Length	Standard 300mm(adjustable)	
Electrical Noise	$<0.01\Omega$	
Mechanical Data		
Parameter	Value	
Working Life	See Product Quality Level Table	
Rotating Speed	See Product Quality Level Table	
Working temperature	$-30^{\circ}C \sim 80^{\circ}C$	
Operating Humidity	0~85% RH	
Contact Material	See Product Quality Level Table	
Housing Material	See Product Quality Level Table	
Torque	0.05N.m; +0.01N.m/6rings	
Protection grade	IP51	

Product Quality Level Table

Part#	Max Speed	Working Life	Torque	Housing Material	Electrical Noise①@10RPM
MC260	250RPM	10 million	0.02 N·m	Plastics	10m Ω
MC2609	1000RPM	20 million	0.005 N·m	Metal	4m Ω

Lead Wires Color Code

Ring	1	2	3	4	5	6	7	8	9	10	11	12
Color	RED	GRN	YEL	VLT	GRY	BLK	BLU	DB	BRN	ORG	WHT	KHA

Options for custom slip ring

- MC2609 is the high-end version corresponding to MC260.
- Optional flange mounting.
- Specified connectors and Heat-shrink tube.
- Longer lead lengths available.
- High temperature is optional.
- Military Grade.