

# MHF100 Series

## 1 Channel Rf Rotary Joints

MHF100 is single channel high frequency rotary joint, which is specifically designed for high-speed serial digital signals or analog signal transmission. It can support maximum transfer rate 30GHz. MHF series can support single channel or high-frequency signal transmission by itself. Also MHF series can be customized to combine high-frequency signal with 24V control signal, communication signal, power supply and fluid media. Please refer to MHF108 series.

### Typical application:

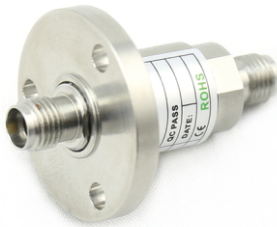
- Military radar antenna, multi shaft 3D simulator
- Antenna rotating platform with radio-frequency signal, support 1080P, 1080I, etc HD-SDI high definition rotary table
- Support 1080P, 1080I, etc HD-SDI all-in-one machine (high speed dome)

### Part# Explanation

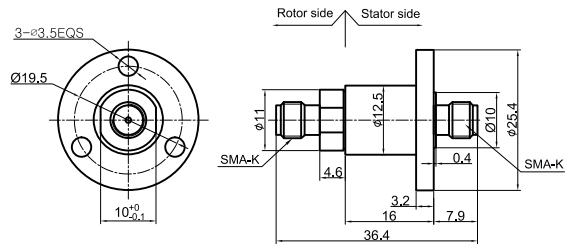
## MHF100- SMA - 18G

MHF: High frequency slip ring	18G: Max frequency 18GHZ
100: 1 channel high frequency	
SMA: SMA connector; N: N connector:	
W50: Exit RG316 Wires/50Ω	
W75: Exit RG179 Wires/75Ω	

MHF100-SMA-30G Picture



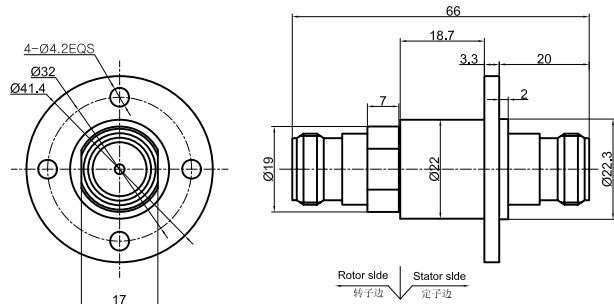
MHF100-SMA-30G Dimensions

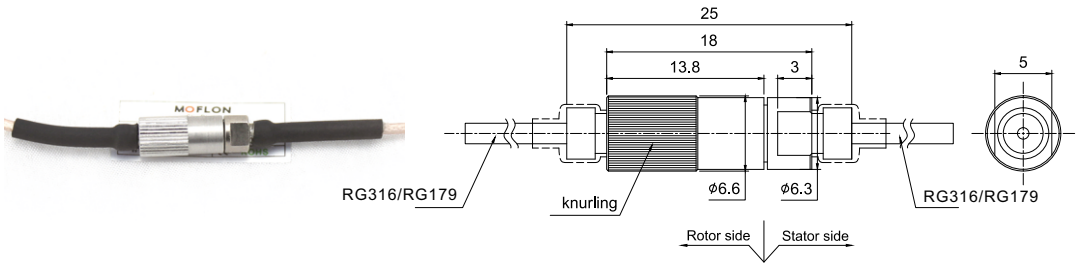


MHF100-N-12G Picture



MHF100-N-12G Dimensions





### Part# List

MHF100 - 1 channel RF rotary joint part list							
Part#	RF Channel	Frquency	Connector Type	Characteristic Impedance	Insertion Loss	VSWR	VSWR Ripple
MHF100-SMA-30G	1	DC-30GHz	SMA	50Ω	0.3db	≤1.3	≤0.05
MHF100-N-12G	1	DC-12GHz	N	50Ω	0.3db	≤1.3	≤0.05
MHF100-W50-3G	1	DC-3GHz	coaxial-cable RG316	50Ω	0.3db	≤1.3	≤0.05
MHF100-W75-3G	1	DC-3GHz	coaxial-cable RG179	75Ω	0.3db	≤1.3	≤0.05

### Specifications

Mechanical data	
Parameter	Value
Working Life	50 million revs
Rotating Speed	100RPM
Working Temperature	-30°C~80°C
Operating Humidity	0~85% RH
Contact Material	Gold-Gold
Housing Material	stainless steel
Torque	0.1N.m; +0.03N.m/6 rings
Protection Grade	IP51