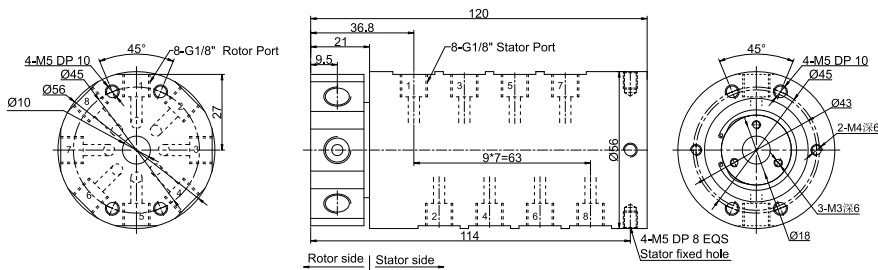


MK81(8 passages Pneumatic Rotary Union--Can combine electric wires)



Mk81 series is 8 passages Pneumatic Rotary Union(Can combine electric wires), with connection size G1/8", compact size, light weight, low torque, Also optional for transmitting power line, signal line, industrial bus, control line, Electromagnetic valve, induction line, etc.; Standard installation is flange mounting.
Media Types: compressed Air/Gas, vacuum, etc.

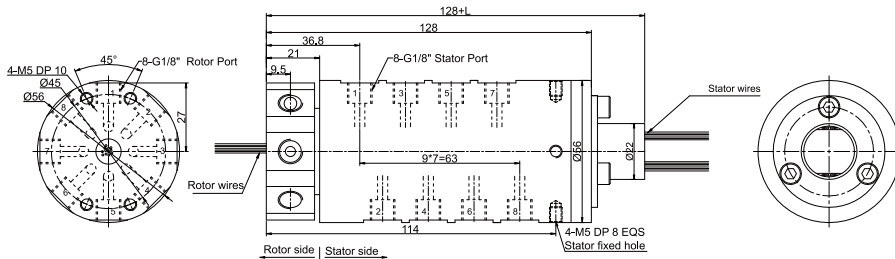
MK81 (rotary union only for pneumatic) drawing (8 in 8 out, connection size G1/8")



Part list

Model	Passages	Connection Size	Adaptive tube
MK81	8	G1/8"	6~8mm

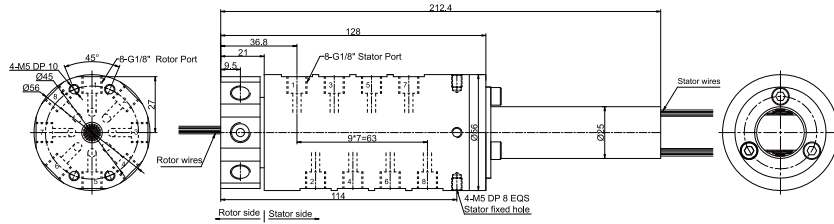
MK81S-S12(S18, S24, S36) drawing 8 in 8 out, connection size G1/8" + 12~36 wires x signal(2A)



Part list

Model	Passages	Connection Size	Adaptive tube	Signal(2A)	L(mm)
MK81S-S12	8	G1/8"	6~8mm	12	22.5
MK81S-S18	8	G1/8"	6~8mm	18	29.5
MK81S-S24	8	G1/8"	6~8mm	24	40.1
MK81S-S36	8	G1/8"	6~8mm	36	53.8

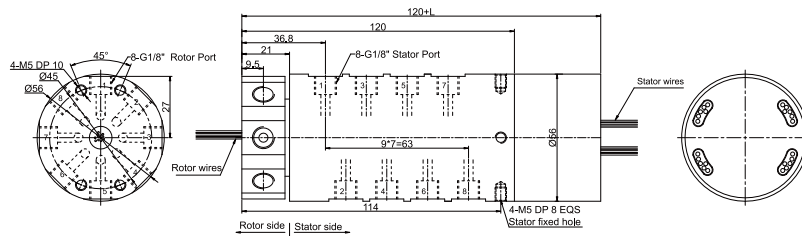
MK81 S-S56 drawing 8 in 8 out, connection size G1/8"



Part list

Model	Passages	Connection Size	Adaptive tube	Signal(2A)
MK81S-S56	8	G1/8"	6~8mm	56

MK81 -PXX-SXX drawing 8 in 8 out, connection size G1/8" + signal(5A)/10A



Part list

Model	Passages	Connection Size	Adaptive tube	10A	Signal(5A)	L(mm)
MK81-P0610	8	G1/8"	6~8mm	6	0	38
MK81-S06	8	G1/8"	6~8mm	0	6	38
MK81-P1210	8	G1/8"	6~8mm	12	0	54.8
MK81-P0610-S06	8	G1/8"	6~8mm	6	6	54.8
MK81-S12	8	G1/8"	6~8mm	0	12	54.8
MK81-P1810	8	G1/8"	6~8mm	18	0	71.5
MK81-P0610-S12	8	G1/8"	6~8mm	6	12	71.5
MK81-P1210-S06	8	G1/8"	6~8mm	12	6	71.5
MK81-S18	8	G1/8"	6~8mm	0	18	71.5
MK81-S24	8	G1/8"	6~8mm	0	24	88.4
MK81-P0610-S18	8	G1/8"	6~8mm	6	18	88.4
MK81-S30(2A)	8	G1/8"	6~8mm	0	30	105.2
MK81-S36(2A)	8	G1/8"	6~8mm	0	36	125

Note:10A and signal(5A) can be freely combined, please contact customer service for details.

Specifications

Rotary Union Specifications			Mechanical data	
Parameter	Value		Parameter	Value
Passage	8 in 8 out, G1/8"		Working life	Over 10 Million Revs
Max Pressure	1MPa(high pressure can be customized), Vacuum 0.01torr		Rated Rotating Speed	300RPM
Torque	Related to the connection size, please see the product selection table		Working Temperature	-30°C~80°C
Electrical Data			Operating Humidity	0~85% RH
Parameter	Value		Contact Material	Precious Metal
	Power	Signal	Housing Material	Aluminium Alloy
Rated Voltage	0~240VAC/VDC	0~240VAC/VDC	Protection Grade	IP51
Insulation Resistance	≥500MΩ/500VDC	≥500MΩ/500VDC		
Lead Wires	AWG17#Teflon/PVC	AWG22#Teflon/PVC		
Lead Length	Standard 300mm(adjustable on request)			
Dielectric Strength	500VAC@50Hz, 60s			
Electrical Noise	<0.01Ω			