

KCI Series Rotary Joints

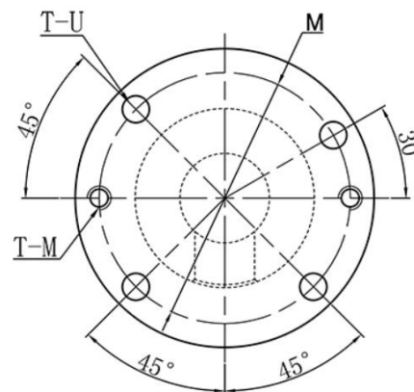
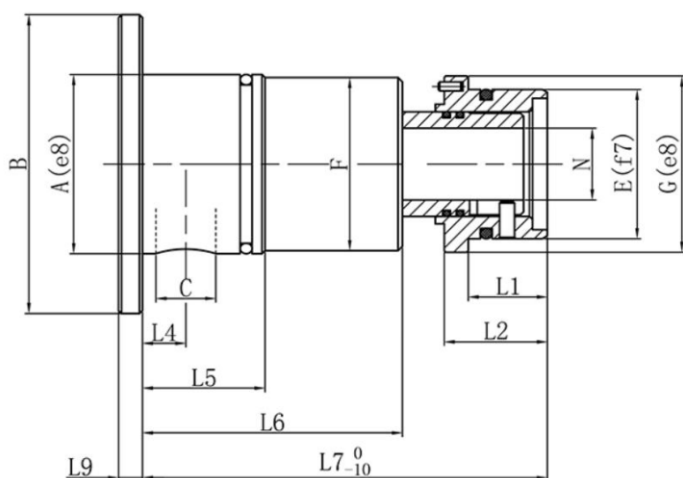
Applicable medium	Temperature	Max pressure	Max Rotary Speed
Water	90°C	1.1Mpa	100RPM



Product Features

- ▲ Balanced sealing structure;
- ▲ Built-in bearing cover to protect the rotary joint;
- ▲ There is no need for metal hoses, which reduces eccentric loads;
- ▲ The water flow resistance is small, the flow area is large, and the cooling efficiency is high;
- ▲ Floating structure, can withstand ±0.5mm shaft head beating;
- ▲ Larger 10mm axial compensation, suitable for thermally expanding rollers

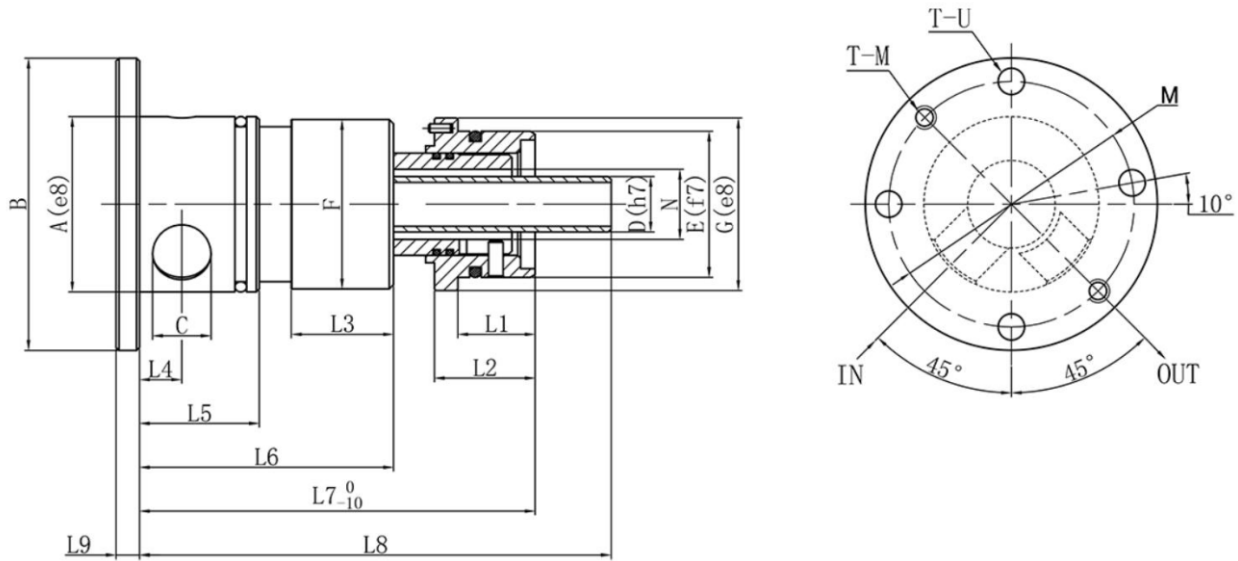
Single Channel



Single Channel Model selection table

Model	A	B	C	D	E	F	G	M	N	T-U	T-M	L1	L2	L3	L4	L5	L6	L7	L8	L9
KCI601	Φ60	Φ100	Φ20	19	Φ59	Φ57	Φ59	Φ84	Φ24	4-Φ9	2-M8	/	37.5	35	15	41	87	135.5	161.5	8
KCI602	Φ60	Φ100	Φ20	19	Φ50	Φ57	Φ50	Φ84	Φ24	4-Φ9	2-M8	26.5	34.5	35	15	41	87	135.5	161.5	8

Two-Channel



Two-Channel Model Selection table

Model	A	B	C	D	E	F	G	M	N	T-U	T-M	L1	L2	L3	L4	L5	L6	L7	L8	L9
KCIS601	Φ60	Φ100	Φ20	19	Φ59	Φ57	Φ59	Φ84	Φ24	4-Φ9	2-M8	/	37.5	35	15	41	87	135.5	161.5	8
KCIS602	Φ60	Φ100	Φ20	19	Φ50	Φ57	Φ50	Φ84	Φ24	4-Φ9	2-M8	26.5	34.5	35	15	41	87	135.5	161.5	8