

KLN Series Steam swivel joints

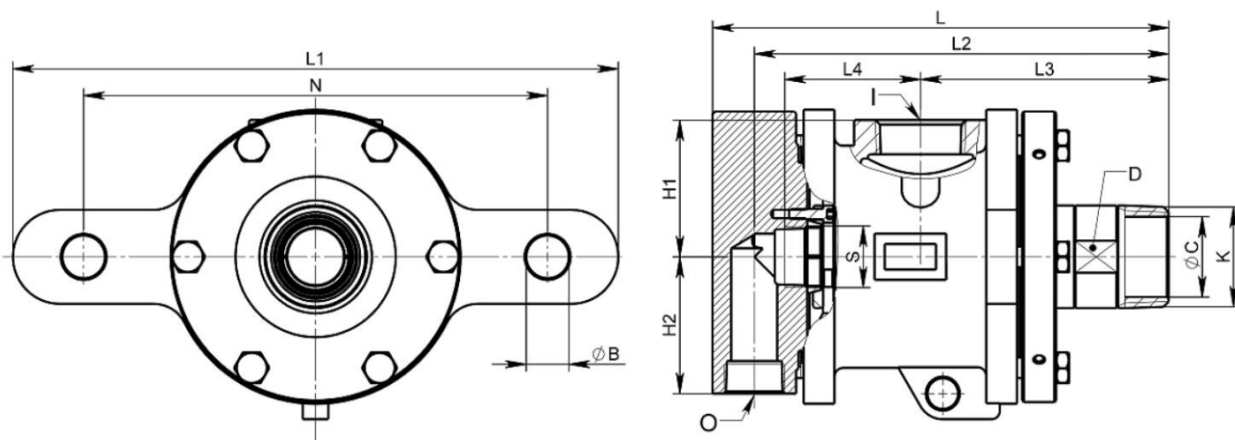
Applicable medium	Temperature	Max pressure	Max Rotary Speed
steam	220°C	2Mpa	300RPM



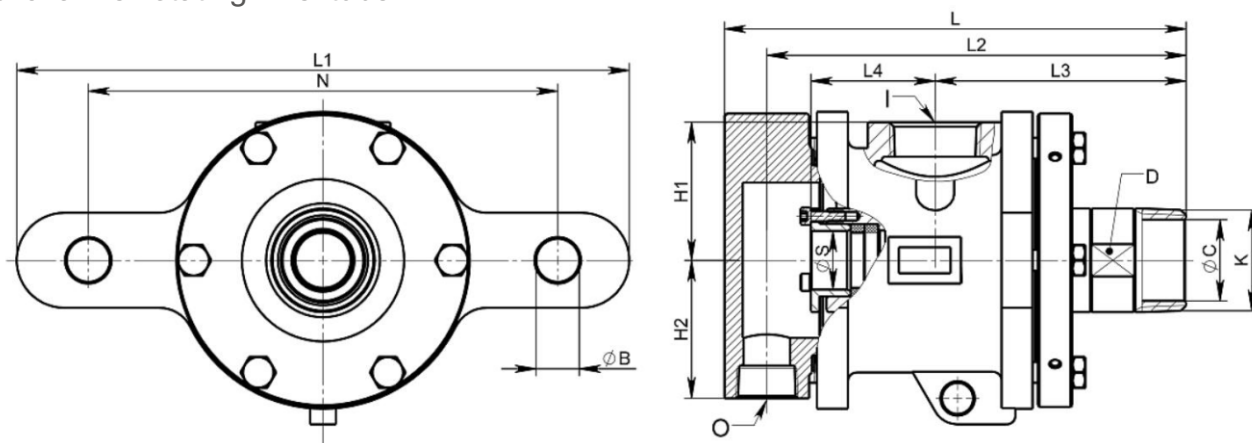
Product Features

- ▲ Double spherical sealing ring, self centering, low friction torque;
- ▲ Lifetime maintenance free, adding lubricating oil for easy maintenance;
- ▲ The fixed inner tube comes with a locking device to increase strength and avoid bending, deformation, or fracture of the inner tube;
- ▲ Double pole external support rotating joint, all the impact force of condensate water is borne by the double pole, and the sealing ring is not affected by condensate water, resulting in a longer service life.

Dual channel fixed inner tube



Dual channel rotating inner tube



Model Selection Table																			
Standard Size	K	I	O	S	L	L1	L2	L3	L4	B	N	H1	H2	Flange rotor					
														ΦC	ΦK	ΦH	ΦW	n-X	
032	1-1/4"	R1-1/4"	Rc1"	Rc1/2"	Rc1/2"	199	270	199	94	84	13	140~220	60	60	32	45	100	75	n-Φ14
040	1-1/2"	R1-1/2"	Rc1-1/4"	Rc3/4"	Rc3/4"	243	315	224	135	77	25	190~260	75	75	37	50	115	85	n-Φ14