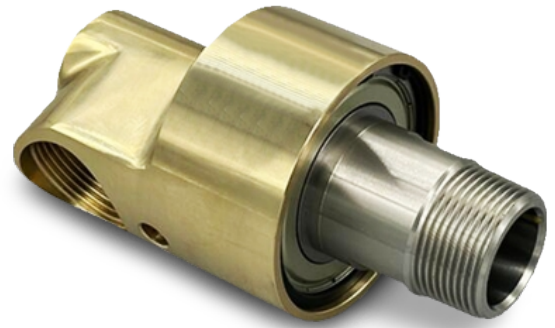


KRX Series Rotary Joints

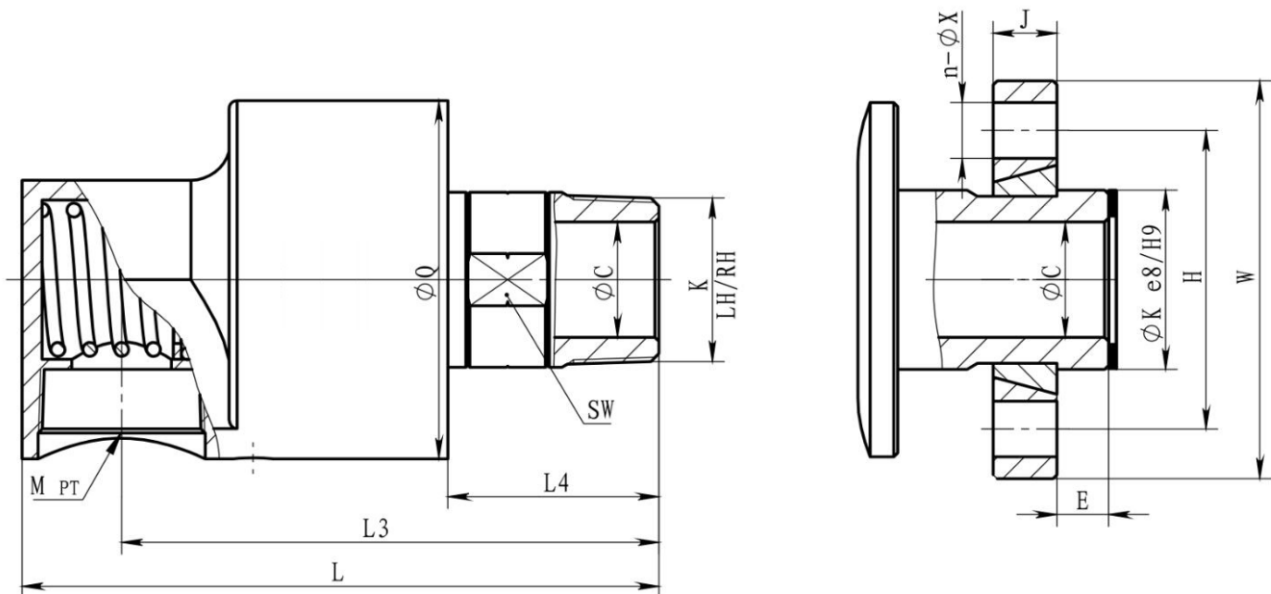
Applicable medium	Temperature	Max pressure	Max Rotary Speed
Water	90°C	1.1Mpa	1500RPM



Product Features

- ▲ Brass shell, corrosion-resistant stainless steel rotor;
- ▲ The combination of fine ceramic material and carbon sealing ring has high speed and low torque performance;
- ▲ Enclosed bearings are used, and lubrication is carried out during the service life, and no maintenance is required except for regular inspections and no leakage caused by wear of the rotary joint.

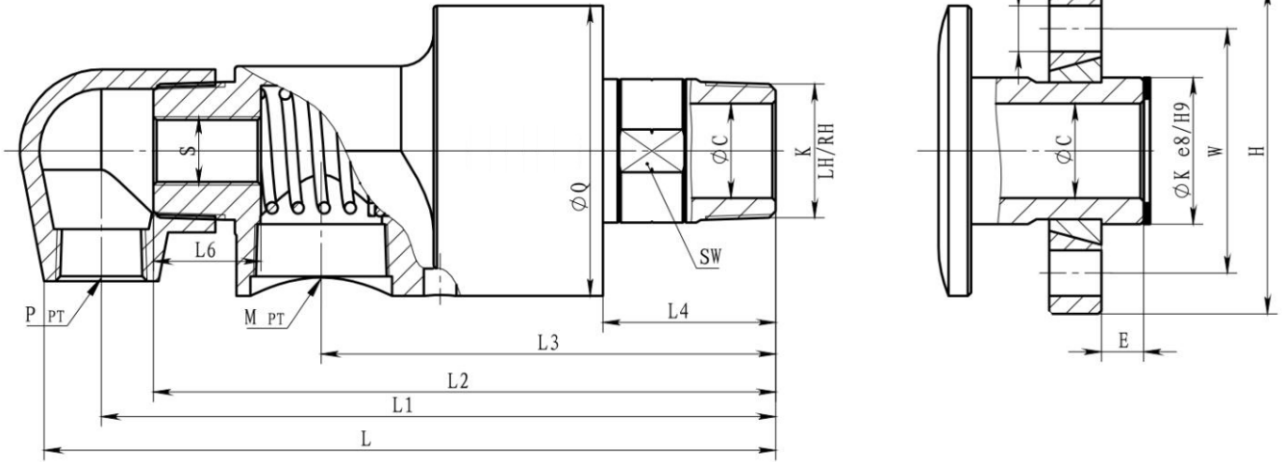
KRXM Single-channel rotary joint



Standard size		K	M	L	L3	L4	Q	SM	Flange rotor						
									C	K	W	H	E	J	n-X
010	3/8"	R3/8"	Rc3/8"	111	95	38	55	22	8	20	40	60	8	14	4-Φ10
015	1/2"	R1/2"	Rc1/2"	111	95	38	55	22	12	25	50	70	8	14	4-Φ10
020	3/4"	R3/4"	Rc3/4"	120	103	38	62	27	16	30	55	80	11	14	4-Φ12
025	1"	R1"	Rc1"	138	115	48	72	32	22	35	65	90	11	14	4-Φ12
032	1-1/4"	R1-1/4"	Rc1-1/4"	165	137	55	90	42	29	45	75	100	13	16	4-Φ14
040	1-1/2"	R1-1/2"	Rc1-1/2"	185	153	60	95	47	35	50	85	115	13	16	4-Φ14
050	2"	R2"	Rc2"	230	190	65	120	59	45	60	98	125	16	16	4-Φ14
065	2-1/2"	R2-1/2"	Rc2-1/2"	256	211	75	152	72	60	75	110	140	19	18	4-Φ14
080	3"	R3"	Rc3"	294	240	90	180	87	70	90	130	160	25	20	6-Φ14

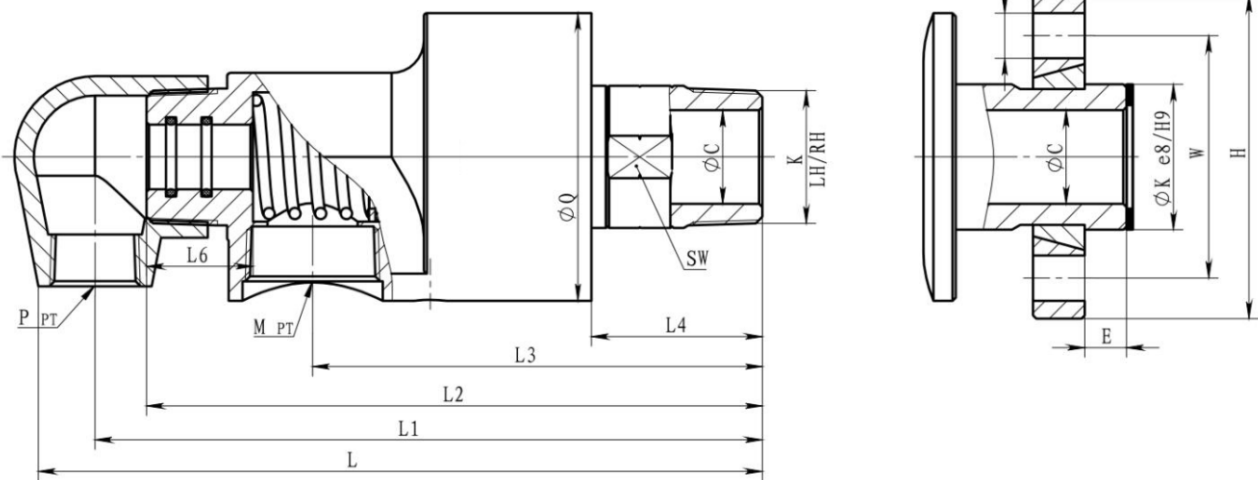
Note: With the difference of medium, caliber, pressure, rotating speed and temperature, the use limitation will also be different. Under special conditions, please contact Moflon Technology Co., Ltd. to determine the safety limitation.

KRXD Two-channel rotary joint (inner tube fixed)



Standard size		K	M	L	L3	L4	Q	SM	Flange rotor						
									C	K	W	H	E	J	n-X
010	3/8"	R3/8"	Rc3/8"	111	95	38	55	22	8	20	40	60	8	14	4-Φ10
015	1/2"	R1/2"	Rc1/2"	111	95	38	55	22	12	25	50	70	8	14	4-Φ10
020	3/4"	R3/4"	Rc3/4"	120	103	38	62	27	16	30	55	80	11	14	4-Φ12
025	1"	R1"	Rc1"	138	115	48	72	32	22	35	65	90	11	14	4-Φ12
032	1-1/4"	R1-1/4"	Rc1-1/4"	165	137	55	90	42	29	45	75	100	13	16	4-Φ14
040	1-1/2"	R1-1/2"	Rc1-1/2"	185	153	60	95	47	35	50	85	115	13	16	4-Φ14
050	2"	R2"	Rc2"	230	190	65	120	59	45	60	98	125	16	16	4-Φ14
065	2-1/2"	R2-1/2"	Rc2-1/2"	256	211	75	152	72	60	75	110	140	19	18	4-Φ14
080	3"	R3"	Rc3"	294	240	90	180	87	70	90	130	160	25	20	6-Φ14

KR XR two-channel rotary joint (inner tube rotation)



Standard size		K	M	L	L3	L4	Q	SM	Flange rotor						
									C	K	W	H	E	J	n-X
010	3/8"	R3/8"	Rc3/8"	111	95	38	55	22	8	20	40	60	8	14	4-Φ10
015	1/2"	R1/2"	Rc1/2"	111	95	38	55	22	12	25	50	70	8	14	4-Φ10
020	3/4"	R3/4"	Rc3/4"	120	103	38	62	27	16	30	55	80	11	14	4-Φ12
025	1"	R1"	Rc1"	138	115	48	72	32	22	35	65	90	11	14	4-Φ12
032	1-1/4"	R1-1/4"	Rc1-1/4"	165	137	55	90	42	29	45	75	100	13	16	4-Φ14
040	1-1/2"	R1-1/2"	Rc1-1/2"	185	153	60	95	47	35	50	85	115	13	16	4-Φ14
050	2"	R2"	Rc2"	230	190	65	120	59	45	60	98	125	16	16	4-Φ14
065	2-1/2"	R2-1/2"	Rc2-1/2"	256	211	75	152	72	60	75	110	140	19	18	4-Φ14
080	3"	R3"	Rc3"	294	240	90	180	87	70	90	130	160	25	20	6-Φ14