

KSAB Series Rotary Joints

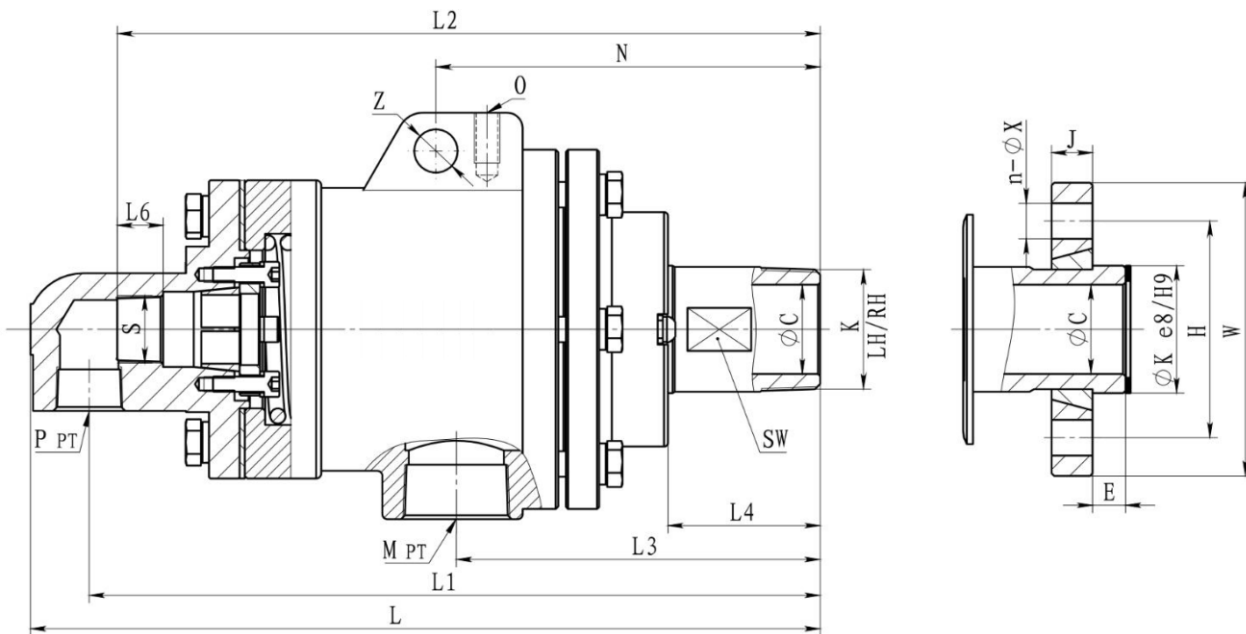


Applicable medium	Temperature	Max pressure	Max Rotary Speed
Steam series	280°C	3.2Mpa	350RPM

Product Features

- ▲ Two graphite bearings with widened spacing can more effectively support siphons and hoses;
- ▲ The compressed stone black seal improves strength and impact resistance, resulting in a longer service life of the rotary joint;
- ▲ The hardened rotor, nickel plated end cover, and shell have an extremely long service life under high pressure conditions;
- ▲ External seal wear indication helps to achieve scheduled maintenance and reduces expensive downtime;
- ▲ Inner tube locking device enhances the strength of the inner tube. Effectively avoiding the fracture or deformation of the inner tube at the connection between the inner tube and the shell due to the reduced strength of the inner tube thread processing

Dimension



Standard Size	K	M	P	S	L	L1	L2	L3	L4	L6	N	Z	O	Q	Standard Size							
															φC	E	φK	W	H	J	n-X	
032	1-1/4"	R1-1/4"	Rc1"	Rc3/4"	Rc1/2"	279	246	240	125	52	17	129	17	M10	132	29	13	45	75	100	16	n-φ14
040	1-1/2"	R1-1/2"	Rc1-1/4"	Rc3/4"	Rc3/4"	310	285	275	140	52	16	149	17	M10	141	35	13	50	85	115	16	n-φ14
050	2"	R2"	Rc1-1/2"	Rc1"	Rc1"	348	322	307	155	67	19	161	18	M10	164	43	16	60	95	125	16	n-φ14