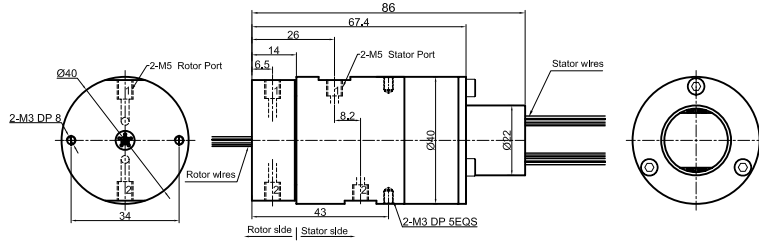
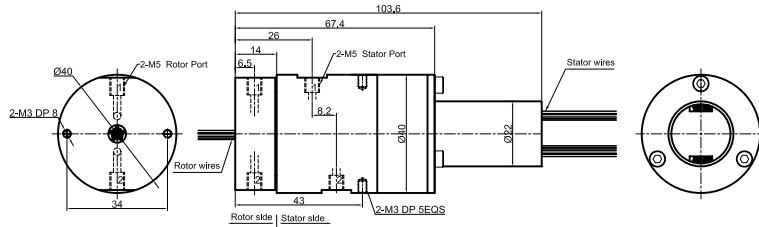


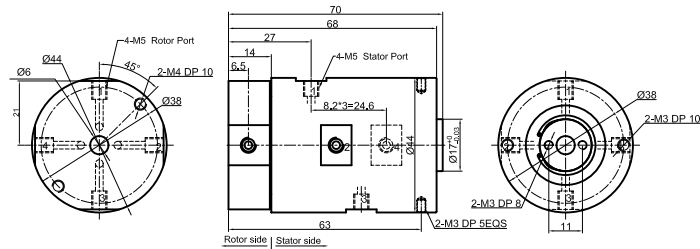
MQR2-S12 drawing 2 in 2 out, connection size M5 + 12 wires x signal(2A)



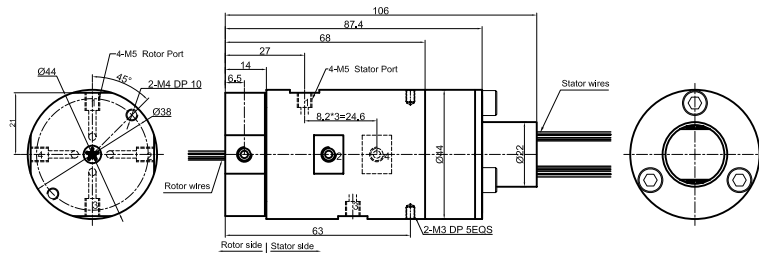
MQR2-S24 drawing 2 in 2 out, connection size M5 + 24 wires x signal(2A)



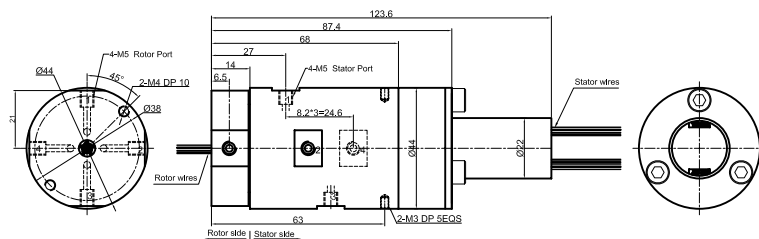
MQR4 drawing 4 in 4 out, connection size M5



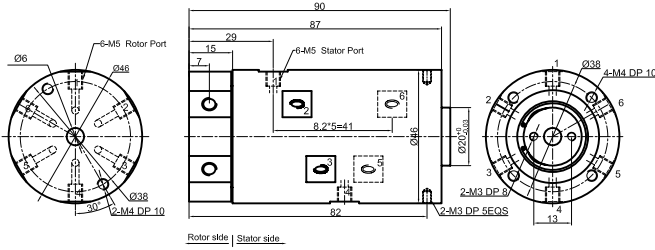
MQR4-S12 drawing 4 in 4 out, connection size M5 + 12 wires x signal(2A)



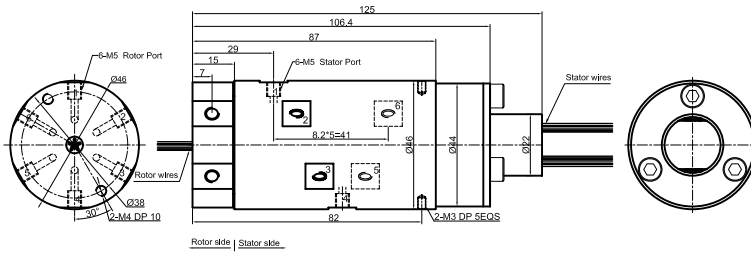
MQR4-S24 drawing 4 in 4 out, connection size M5 + 24 wires x signal(2A)



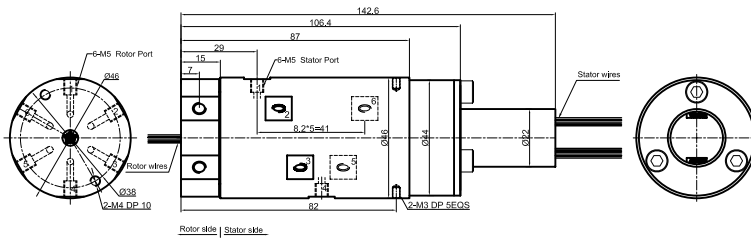
MQR6 drawing 6 in 6 out, connection size M5



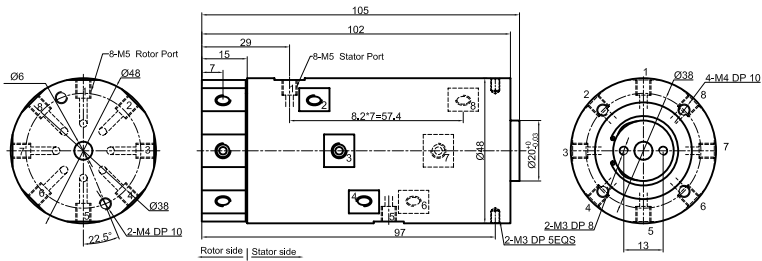
MQR6-S12 drawing 6 in 6 out, connection size M5 + 12 wires x signal(2A)



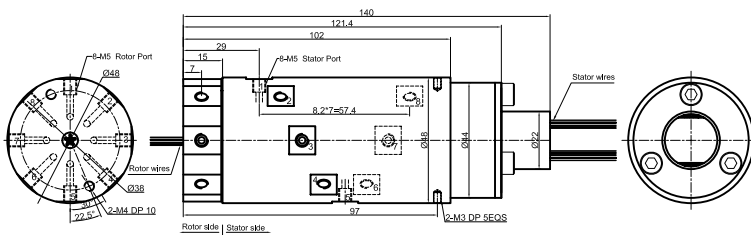
MQR6-S24 drawing 6 in 6 out, connection size M5 + 24 wires x signal(2A)



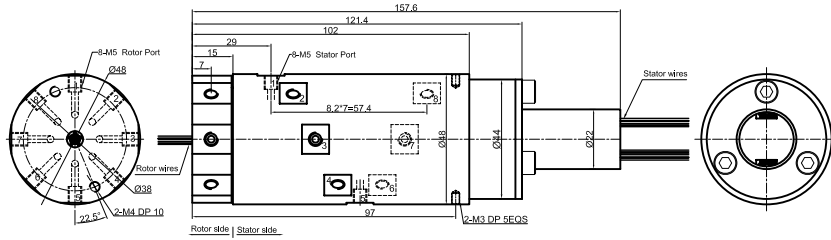
MQR8 drawing 8 in 8 out, connection size M5



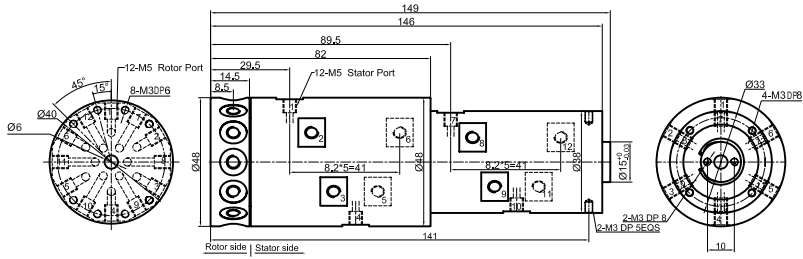
MQR8-S12 drawing 8 in 8 out, connection size M5 + 12 wires x signal(2A)



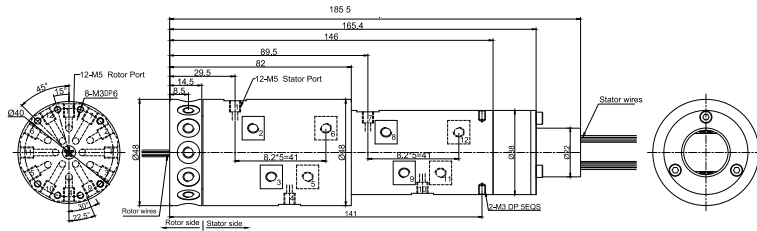
MQR8-S24 drawing 8 in 8 out, connection size M5 + 24 wires x signal(2A)



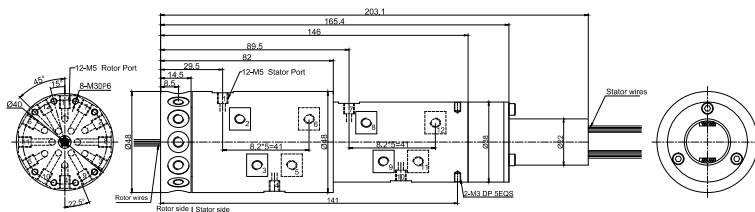
MQR12 drawing 12 in 12 out, connection size M5



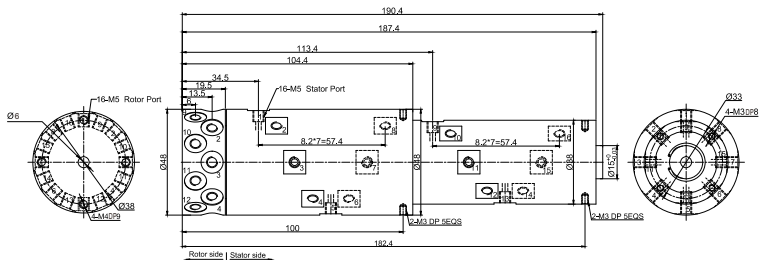
MQR12-S12 drawing 12 in 12 out, connection size M5 + 12 wires x signal(2A)



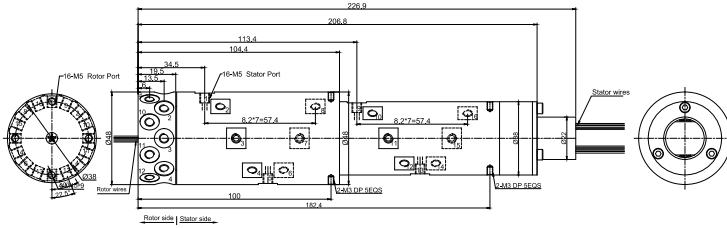
MQR12-S24 drawing 12 in 12 out, connection size M5 + 24 wires x signal(2A)



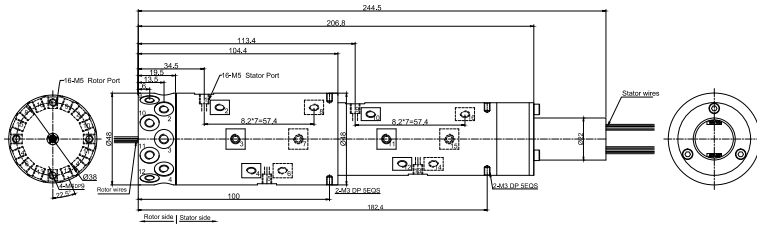
MQR16 drawing 16 in 16 out, connection size M5



MQR16-S12 drawing 16 in 16 out, connection size M5 + 12 wires x signal(2A)



MQR16-S24 drawing 16 in 16 out, connection size M5 + 24 wires x signal(2A)



Product Quality Level Table

Products Level Code	Max Rotating Speed	Working Life	Sealing element
Common Quality Level	100RPM	10 Million Revs	Domestic famous brand seals
Industrial Quality Level	200RPM	30 Million Revs	Imported sealing elements

Rings lead color code

Ring	1	2	3	4	5	6	7	8	9	10	11	12
Color	RED	GRN	YEL	PUR	GRA	BLK	BLU	DB	BRN	ORA	WHT	KHA
Ring	13	14	15	16	17	18	19	20	21	22	23	24
Color	WHT RED	WHT BLK	WHT BLU	WHT VLT	WHT BRN	WHT GRN	WHT ORN	WHT YEL	WHT GRA	BLK RED	BLK BLU	YEL GRN

Note: 6 wires for one group color, from 7-12, repeat the same color as 1..6, indicate with number code pipe.

Options for Custom Slip Ring

Note: Below special demands can be customized. The delivery date will be extended about 3 to 15 days;also the cost will be increased about 5% to 50%. Most of our basic parts are standard and modular,which can save the cost and lead time.

1. Inner bore size, cable exit way and cable length for both rotor and stator can be customized.
2. Because of the structure limitation, length/height/OD can be customized on your request.
3. Max support 200 rings of power/signal.
4. Aviation plug, terminal and heat-shrink tube are optional.
5. Combined slip ring for Yaskawa, Panasonic and Siemens servo control signal, power line and encoder line.
6. Support mixed high speed data transmission(including Ethernet, USB, RS232, RS485, Profibus, CanBUS, CANOPEN, DeviceNET, CC-LINK, ProfiNET,EtherCAT, etc).
7. Can combine temperature control signal with thermocouple signal.
8. Special environment can be customized, such as quakeproof, high temperature, etc.
9. Combined Pneumatic/hydraulic joint with electric slip ring.
10. High temperature can up to 500 degree centigrade.
11. High voltage can up to 110KV.
12. Rotating speed can up to 10000RPM.
13. Maximum current can up to 5000(A) amperes.
14. Military Grade.
15. Optional for underwater IP65, IP68.
16. Optional for stainless steel housing.

Technical support: technical@moflon.com