

# MW5045 series slip rings

MW5045 series is terminal large current slip ring with signal wire; the current can be 50A/100A/200A/500A. Advantages: small size, light weight, large current-carrying. This series slip ring is suitable for the occasion where single big current is needed, such as welding, electroplating industry, etc.



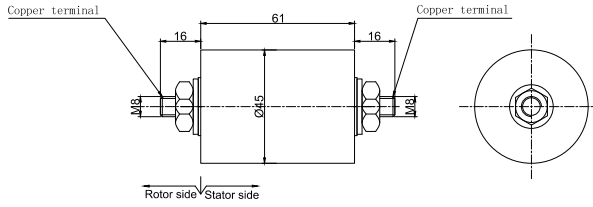
## Part# Explanation

### MW 5045 - P0150

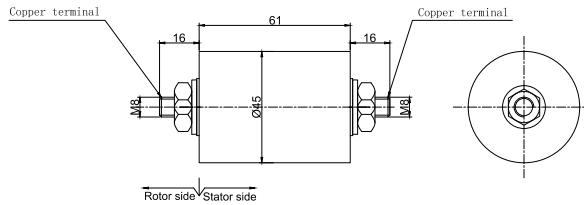
MW: large current series slip ring  
 5 : exit with terminals  
 045: outer diameter 45mm

P0150 : P-Power ring,  
 01-1 ring 50-50A/ring

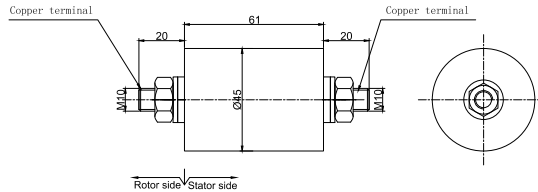
#### MW5045-P0150 dimension



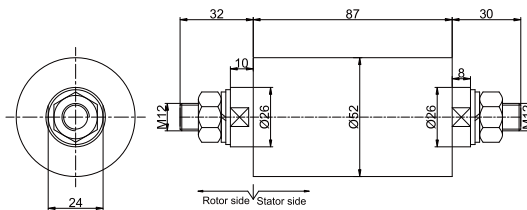
#### MW5045-P01100 dimension



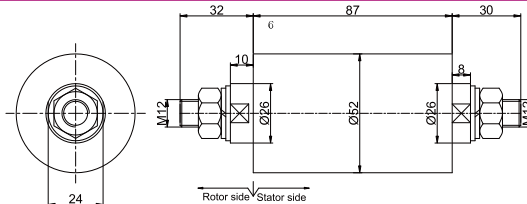
#### MW5045-P01150 dimension



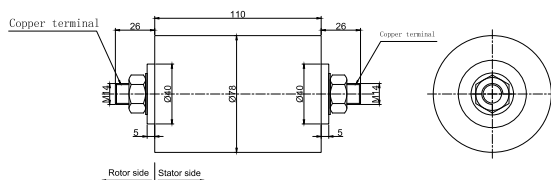
#### MW5045-P01200 dimension



#### MW5045-P01250 dimension



### MW5045-P01500 dimension



### Part# List

| MW5045 power slip ring(single way) series part list |     |      |      |      |      |      |       |
|---|-----|------|------|------|------|------|-------|
| Part#   | 50A | 100A | 150A | 200A | 250A | 500A | 1000A |
| MW5045-P0150  | 1   | 0    | 0    | 0    | 0    | 0    | 0     |
| MW5045-P01100                                       | 0   | 1    | 0    | 0    | 0    | 0    | 0     |
| MW5045-P01150                                       | 0   | 0    | 1    | 0    | 0    | 0    | 0     |
| MW5045-P01200                                       | 0   | 0    | 0    | 1    | 0    | 0    | 0     |
| MW5045-P01250                                       | 0   | 0    | 0    | 0    | 1    | 0    | 0     |
| MW5045-P01500                                       | 0   | 0    | 0    | 0    | 0    | 1    | 0     |
| MW5045-P011000                                      | 0   | 0    | 0    | 0    | 0    | 0    | 1     |

Note:1) N channels 10A rings parallel can be used as 1 channel N\*10A current. For example: 2 rings 10A parallel could be used as 1 wires 20A  
 2) Current value can be customized, please contact customer service for more details.

### Specification

| Mechanical Data     |                         | Electrical Data       |                  |
|---------------------|-------------------------|-----------------------|------------------|
| Parameter           | Value                   | Parameter             | Value            |
| Working Life        | 20 Million revs         |                       | Power            |
| Rotating Speed      | 250RPM                  | Rated Voltage         | 0~690VAC/VDC     |
| Working Temperature | -30°C~80°C              | Insulation Resistance | ≥1000MΩ/1000VDC  |
| Operating Humidity  | 0~85% RH                | Lead Wires            | terminal         |
| Contact Material    | precious metal          | Dielectric Strength   | 500VAC@50Hz, 60s |
| Housing Materia     | aluminium alloy         | Electrical Noise      | <0.01Ω           |
| Torque              | 0.1N.m; +0.03N.m/6rings |                       |                  |
| Protection Grade    | IP51                    |                       |                  |

### Options for custom slip ring

Note: Below special demands can be customized. According, the delivery date will be extended 3 to 15 days; also the cost will be increased 30% to 50%. Most of our basic parts are standard and modular, which can save the cost and lead time.

- ① Cable exit way and cable length can be customized for both rotor and stator.
- ② Because of the structure limitation, length/height/OD can be customized on your request.
- ③ Support current or signal up to 200 rings.
- ④ Aviation plug, terminal and heat-shrink tube are optional.
- ⑤ Hybrid slip ring for Yaskawa/Panasonic/Siemens servo control signal, power line and encoder line.
- ⑥ Support mixed high speed data transmission (including Ethernet, USB, RS232, RS485, Profibus, CanBUS, CANOPEN, DeviceNET, CC-LINK, ProfiNET, EtherCAT, etc.)
- ⑦ Can combine temperature control signal with thermocouple signal.
- ⑧ Special environment can be customized, such as quakeproof, high temperature, etc.
- ⑨ Hybrid Pneumatic/hydraulic and electric slip ring can be mixed.
- ⑩ High temperature can up to 500 degrees.
- ⑪ High pressure can up to 110KV
- ⑫ Rotating speed can up to 10000RPM
- ⑬ Maximum current can up to 5000 amperes.
- ⑭ Military grade
- ⑮ Optional for underwater IP65, IP68.
- ⑯ Optional for stainless steel housing

Technical support: technical@moflon.com