

# MQ Series Fluid Rotary Unions



## Features

- 360 degree rotating while transfer gas,liquid etc medias.
- Support 1/2/3/4/5/6/8/10/12/16 Pneumatic/Hydraulic passages
- Standard port:M5 , G1/8 , G1/4 , G3/8 , G1/2 , G3/4,G1"etc
- Tube size can be customized
- Can transfer air,vacuum,hydraulic oil,water,hot water,cooling water,steam etc medias.
- Can custom special joints for high speed,high temp,high pressure.

## MQ Series Models

Model#	Passage	Port Size	Tube Size	Remarks
MQ100	1 in 1 out	M5; G1/8; G1/4; G3/8; G1/2	3mm~20mm	*
MQ104	1 in 4 out	M5; G1/8; G1/4; G3/8; G1/2	3mm~20mm	*
MQ200	2 in 2 out	M5; G1/8; G1/4; G3/8; G1/2	3mm~20mm	*
MQ200F	2 in 2 out	M5; G1/8; G1/4; G3/8; G1/2	3mm~20mm	flange side exit
MQ200W	2 in 2 out	M5; G1/8; G1/4; G3/8; G1/2	3mm~20mm	double flange , 100kg load
MQ300	3 in 3 out	M5; G1/8; G1/4; G3/8; G1/2	3mm~20mm	*
MQ300F	3 in 3 out	M5; G1/8; G1/4; G3/8; G1/2	3mm~20mm	flange side exit
MQ300W	3 in 3 out	M5; G1/8; G1/4; G3/8; G1/2	3mm~20mm	double flange , 100kg load
MQ400	4 in 4 out	M5; G1/8; G1/4; G3/8; G1/2	3mm~20mm	*
MQ400F	4 in 4 out	M5; G1/8; G1/4; G3/8; G1/2	3mm~20mm	flange side exit
MQ400W	4 in 4 out	M5; G1/8; G1/4; G3/8; G1/2	3mm~20mm	double flange , 100kg load
MQ600	6 in 6 out	M5; G1/8; G1/4;	3mm~12mm	*
MQ600F	6 in 6 out	M5; G1/8; G1/4;	3mm~12mm	flange side exit
MQ800	8 in 8 out	M5; G1/8; G1/4;	3mm~12mm	*
MQ1000	10 in 10 out	M5;	3mm~8mm	*
MQ1200	12 in 12 out	M5;	3mm~8mm	*
MQ1600	16 in 16 out	M5;	3mm~8mm	*

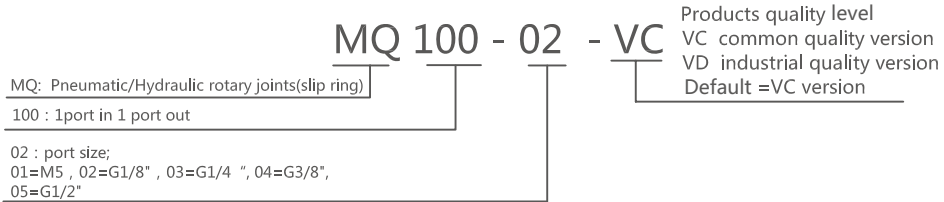
60% of products are customized,please contact sales for special requirements

# MQ100 Series (1 Port In 1 Port Out Fluid Rotary Unions)



MQ100 Pneumatic/Hydraulic rotary joints, optional size for M5,G1/8, G1/4,G3/8,G1/2,it can be customized for larger port,for example G1", G2", medias: compressed air,vacuum,hydrogen,nitrogen,Chemical mixed gas,steam,cooling water,hot water,hot oil,petroleum,vitriol,drink.etc.

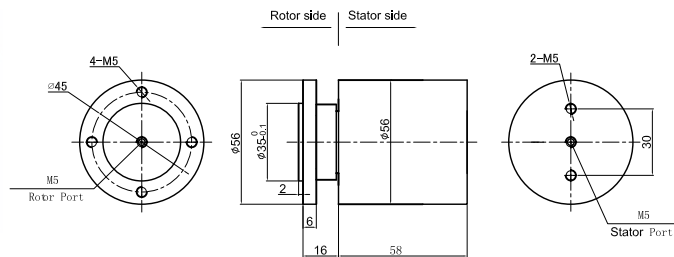
## Part# Explanation



M5 Port



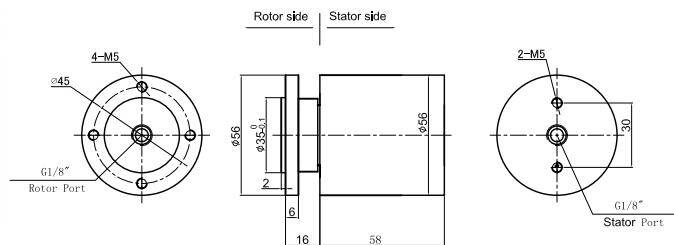
MQ100-01 Dimensions



G1/8 Port



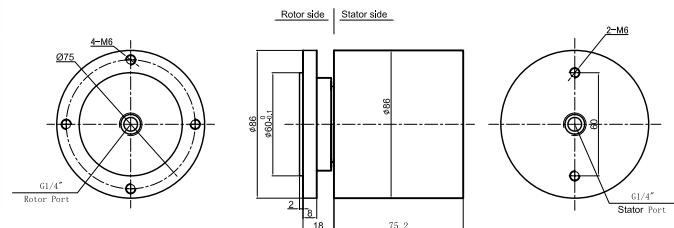
MQ100-02 Dimensions



G1/4 Port



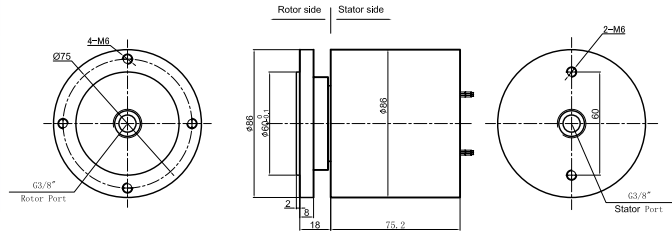
MQ100-03 Dimensions



G3/8 Port



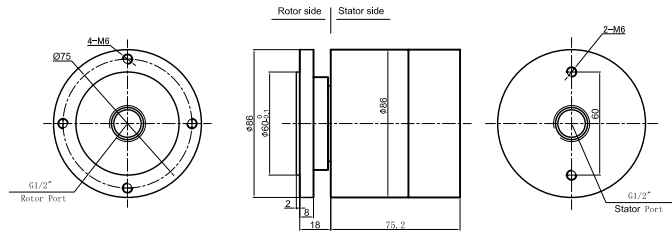
MQ100-04 Dimensions



G1/2 Port



MQ100-05 Dimensions



### Part# list

MQ100 series Pneumatic/Hydraulic rotary joints part list							
Part#	Pneumatic/Hydraulic passages	Max torque (N.M)	Port size	Part#	Pneumatic/Hydraulic passages	Max torque (N.M)	Port size
MQ100-01	1 in 1 out	0.3	M5	MQ100-04	1 in 1 out	1.6	G3/8 "
MQ100-02	1 in 1 out	0.8	G1/8 "	MQ100-05	1 in 1 out	2.0	G1/2 "
MQ100-03	1 in 1 out	1.2	G1/4 "				

### Specifications

Mechanical Data		Rotary Joints Technique Data	
Parameter	Value	Parameter	Value
Working Life	See product quality level table	Passages	1 port in 1 port out
Rotating Speed	See product quality level table	Max Pressure	10MPa (can be customized) , vacuum 0.01torr
Working Temperature	-30°C~80°C	Media	Air,vacuum,hydraulic oil,water,hot water,cooling water,steam etc
Operating Humidity	0~85% RH	Torque	See part list above
Sealing Element	See product quality level table		
Housing Materials	aluminium alloy/stainless steel		
Protection Grade	IP51		

### Product Quality Level Table

Products Level Code	Max Rotating Speed	Working Life	Sealing Element
VC	100RPM	6 millions revs	Common Sealing Element
VD	300RPM	20 millions revs	High-Quality Sealing Element

### Options for custom slip ring

Notes:it can be customized as below requirements,lead time would increase 3~15 days,price would increase 5%~50%.Most basic parts of slip ring are standard and modularized,which saved costs and lead time.

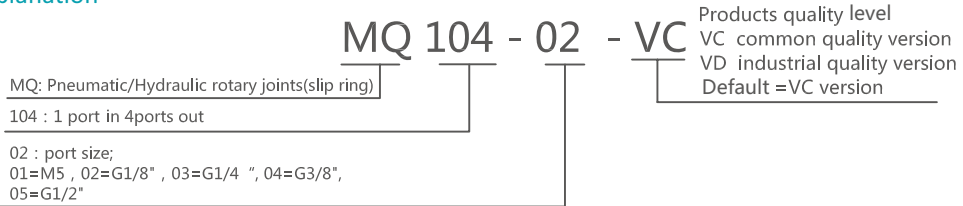
- 1 Port size
  - 2 Pressure
  - 3 Rotating speed
  - 4 Through bore size
  - 5 Corrosive media,all stainless steel,anti-explosion,high temp etc.
  - 6 Can combine with electrical slip ring
- Technical support: [Technical@moflon.com](mailto:Technical@moflon.com)

# MQ104 Series (1 Port In 4 Port Out Fluid Rotary Unions)



MQ104 Pneumatic/Hydraulic rotary joints, optional size for M5,G1/8, G1/4,G3/8,G1/2,it can be customized for larger port,for example G1", G2", medias: compressed air,vacuum,hydrogen,nitrogen,Chemical mixed gas,steam,cooling water,hot water,hot oil,petroleum,vitriol,drink.etc.

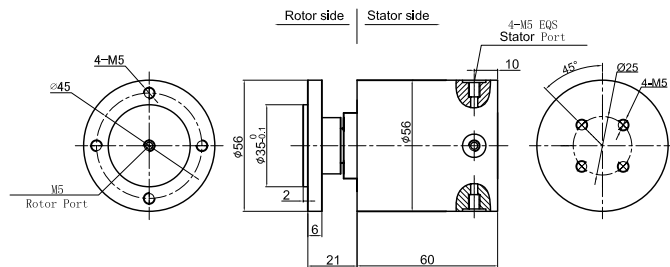
## Part# Explanation



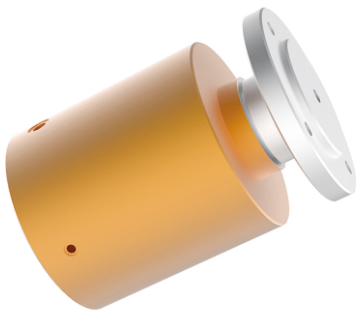
M5 Port



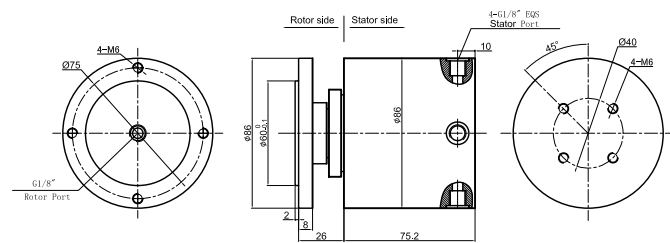
MQ104-01 Dimensions



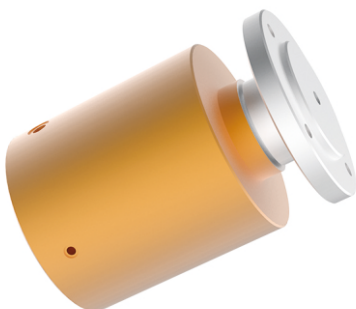
G1/8 Port



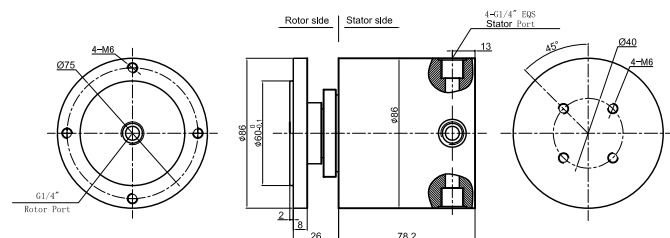
MQ104-02 Dimensions



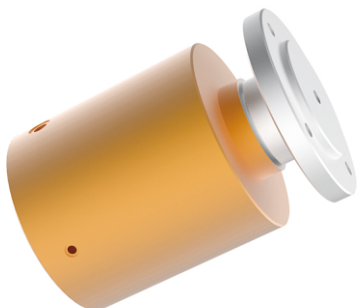
G1/4 Port



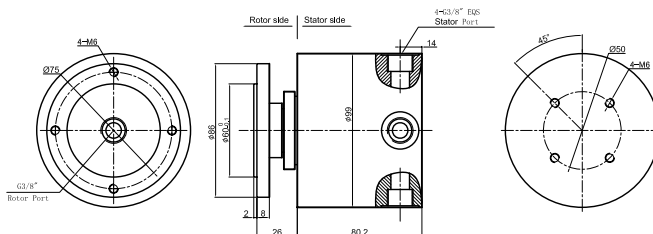
MQ104-03 Dimensions



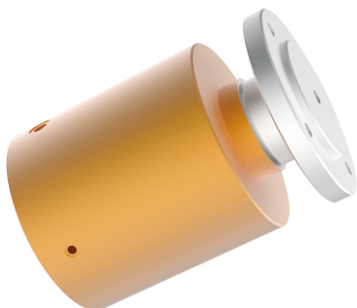
G3/8 Port



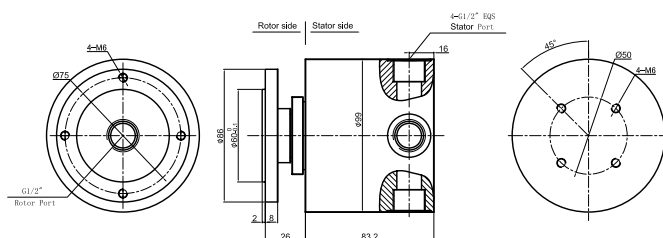
MQ104-04 Dimensions



G1/2 Port



MQ104-05 Dimensions



## Part# list

MQ100 series Pneumatic/Hydraulic rotary joints part list

Part#	Pneumatic/Hydraulic passages	Max torque (N.M)	Port size	Part#	Pneumatic/Hydraulic passages	Max torque (N.M)	Port size
MQ104-01	1 in 4 out	0.3	M5	MQ104-04	1 in 4 out	1.8	G3/8 "
MQ104-02	1 in 4 out	0.8	G1/8 "	MQ104-05	1 in 4 out	2.0	G1/2 "
MQ104-03	1 in 4 out	1.2	G1/4 "				

## Specifications

Mechanical Data		Rotary Joints Technique Data	
Parameter	Value	Parameter	Value
Working Life	See product quality level table	Passages	1 port in 4 ports out
Rotating Speed	See product quality level table	Max Pressure	10MPa (can be customized) , vacuum 0.01torr
Working Temperature	-30°C~80°C	Media	Air,vacuum,hydraulic oil,water,hot water,cooling water,steam etc
Operating Humidity	0~85% RH	Torque	See part list above
Sealing Element	See product quality level table		
Housing Materials	aluminium alloy/stainless steel		
Protection Grade	IP51		

## Product Quality Level Table

Products Level Code	Max Rotating Speed	Working Life	Sealing Element
VC	100RPM	6 millions revs	Common Sealing Element
VD	300RPM	20 millions revs	High-Quality Sealing Element

## Options for custom slip ring

Notes:it can be customized as below requirements,lead time would increase 3~15 days,price would increase 5%~50%.Most basic parts of slip ring are standard and modularized,which saved costs and lead time.

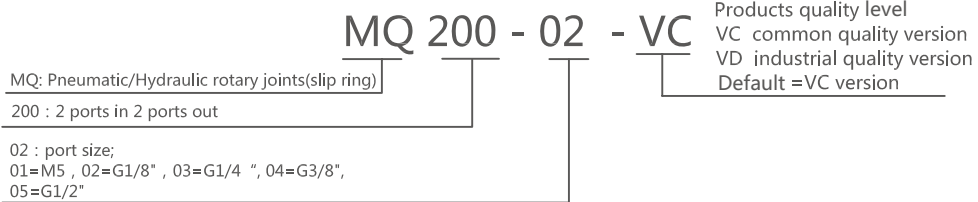
- 1 Port size
  - 2 Pressure
  - 3 Rotating speed
  - 4 Through bore size
  - 5 Corrosive media,all stainless steel,anti-explosion,high temp etc.
  - 6 Can combine with electrical slip ring
- Technical support: [Technical@moflon.com](mailto:Technical@moflon.com)

# MQ200 Series (2 Port In 2 Port Out Fluid Rotary Unions)



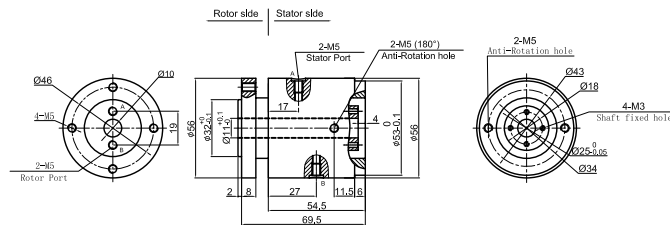
MQ200 Pneumatic/Hydraulic rotary joints, optional size for M5,G1/8, G1/4,G3/8,G1/2,it can be customized for larger port,for example G1", G2",medias: compressed air,vacuum,hydrogen,nitrogen,Chemical mixed gas,steam,cooling water,hot water,hot oil,petroleum,vitriol,drink.etc.

## Part# Explanation



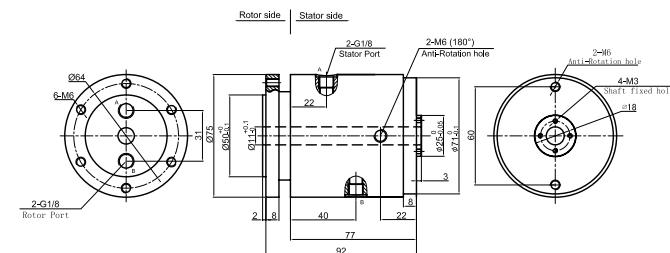
M5 Port

MQ200-01 Dimensions



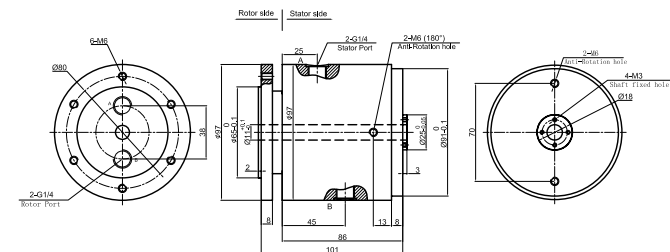
G1/8 Port

MQ200-02 Dimensions



G1/4 Port

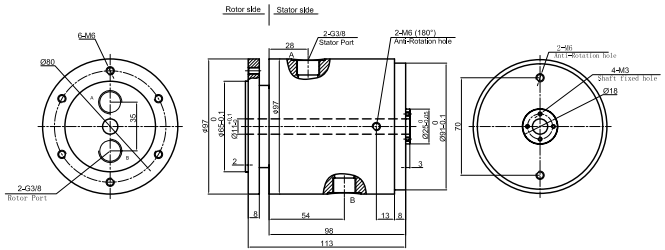
MQ200-03 Dimensions



G3/8 Port



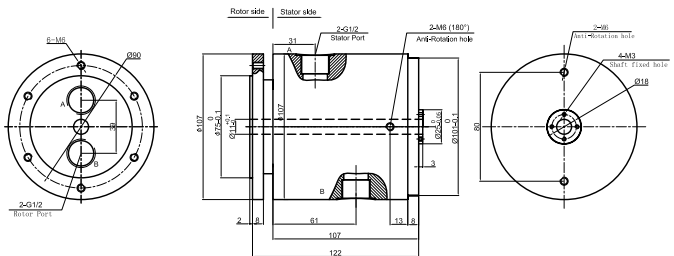
MQ200-04 Dimensions



G1/2 Port



MQ200-05 Dimensions



### Part# list

MQ200 series Pneumatic/Hydraulic rotary joints part list							
Part#	Pneumatic/Hydraulic passages	Max torque (N.M)	Port size	Part#	Pneumatic/Hydraulic passages	Max torque (N.M)	Port size
MQ200-01	2 in 2 out	0.6	M5	MQ200-04	2 in 2 out	3	G3/8 "
MQ200-02	2 in 2 out	1.6	G1/8 "	MQ200-05	2 in 2 out	3.5	G1/2 "
MQ200-03	2 in 2 out	2.4	G1/4 "				

### Specifications

Mechanical Data		Rotary Joints Technique Data	
Parameter	Value	Parameter	Value
Working Life	See product quality level table	Passages	2 ports in 2 ports out
Rotating Speed	See product quality level table	Max Pressure	10MPa (can be customized) , vacuum 0.01torr
Working Temperature	-30°C~80°C	Media	Air,vacuum,hydraulic oil,water,hot water,cooling water,steam etc
Operating Humidity	0~85% RH	Torque	See part list above
Sealing Element	See product quality level table		
Housing Materials	aluminium alloy/stainless steel		
Protection Grade	IP51		

### Product Quality Level Table

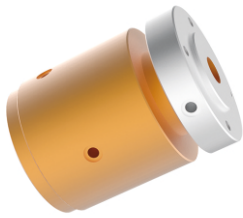
Products Level Code	Max Rotating Speed	Working Life	Sealing Element
VC	100RPM	6 millions revs	Common Sealing Element
VD	300RPM	20 millions revs	High-Quality Sealing Element

### Options for custom slip ring

Notes:it can be customized as below requirements,lead time would increase 3~15 days,price would increase 5%~50%.Most basic parts of slip ring are standard and modularized,which saved costs and lead time.

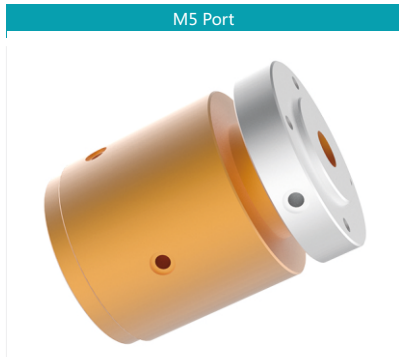
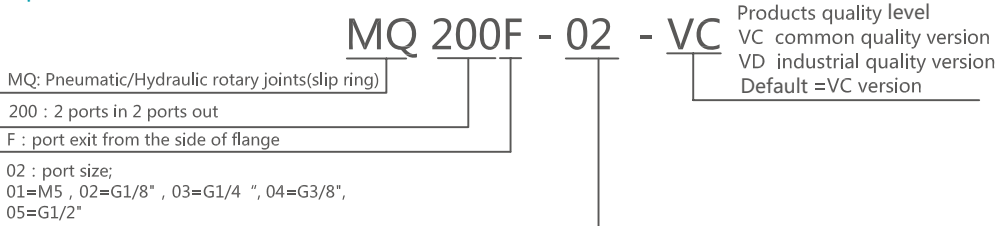
- 1 Port size
  - 2 Pressure
  - 3 Rotating speed
  - 4 Through bore size
  - 5 Corrosive media,all stainless steel,anti-explosion,high temp etc.
  - 6 Can combine with electrical slip ring
- Technical support: [Technical@moflon.com](mailto:Technical@moflon.com)

# MQ200F Series (2 Port In 2 Port Out Fluid Rotary Unions)



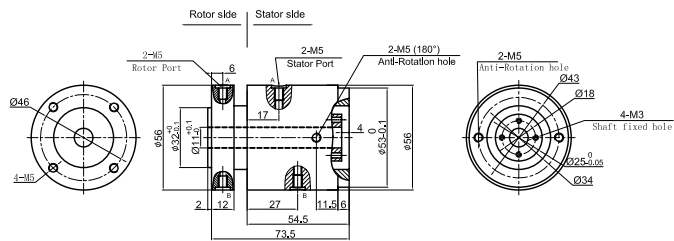
MQ200F Pneumatic/Hydraulic rotary joints, optional size for M5,G1/8, G1/4,G3/8,G1/2,it can be customized for larger port,for example G1", G2", medias: compressed air,vacuum,hydrogen,nitrogen,Chemical mixed gas,steam,cooling water,hot water,hot oil,petroleum,vitriol,drink.etc.

## Part# Explanation



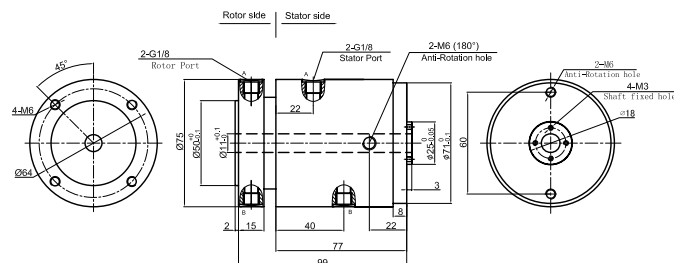
M5 Port

MQ200F-01 Dimensions



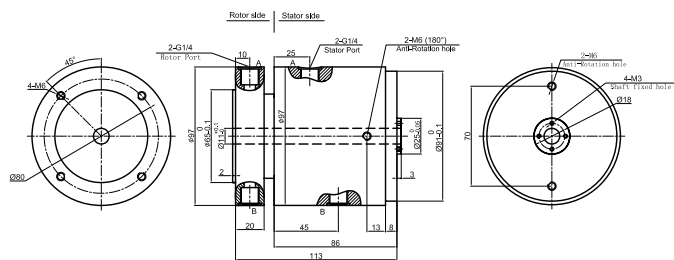
G1/8 Port

MQ200F-02 Dimensions

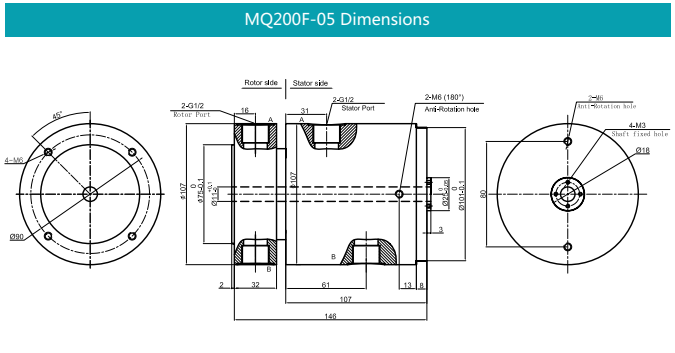
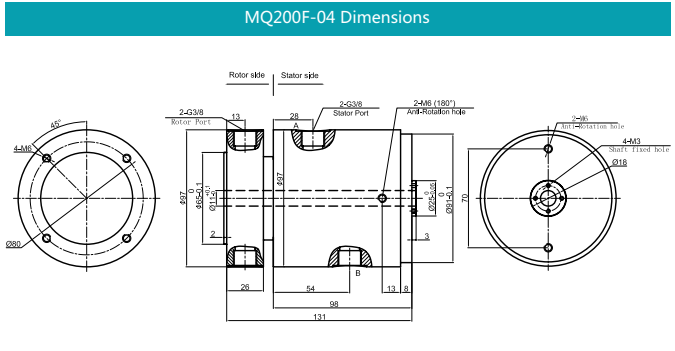


G1/4 Port

MQ200F-03 Dimensions







**Part# list**

MQ200 series Pneumatic/Hydraulic rotary joints part list							
Part#	Pneumatic/Hydraulic passages	Max torque (N.M)	Port size	Part#	Pneumatic/Hydraulic passages	Max torque (N.M)	Port size
MQ200F-01	2 in 2 out	0.6	M5	MQ200F-04	2 in 2 out	3	G3/8 "
MQ200F-02	2 in 2 out	1.6	G1/8 "	MQ200F-05	2 in 2 out	3.5	G1/2 "
MQ200F-03	2 in 2 out	2.4	G1/4 "				

**Specifications**

Mechanical Data		Rotary Joints Technique Data	
Parameter	Value	Parameter	Value
Working Life	See product quality level table	Passages	2 ports in 2 ports out
Rotating Speed	See product quality level table	Max Pressure	10MPa (can be customized) , vacuum 0.01torr
Working Temperature	-30°C~80°C	Media	Air,vacuum,hydraulic oil,water,hot water,cooling water,steam etc
Operating Humidity	0~85% RH	Torque	See part list above
Sealing Element	See product quality level table		
Housing Materials	aluminium alloy/stainless steel		
Protection Grade	IP51		

**Product Quality Level Table**

Products Level Code	Max Rotating Speed	Working Life	Sealing Element
VC	100RPM	6 millions revs	Common Sealing Element
VD	300RPM	20 millions revs	High-Quality Sealing Element

### Options for custom slip ring

Notes:it can be customized as below requirements,lead time would increase 3~15 days,price would increase 5%~50%.Most basic parts of slip ring are standard and modularized,which saved costs and lead time.

- 1 Port size
- 2 Pressure
- 3 Rotating speed
- 4 Through bore size
- 5 Corrosive media,all stainless steel,anti-explosion,high temp etc.
- 6 Can combine with electrical slip ring

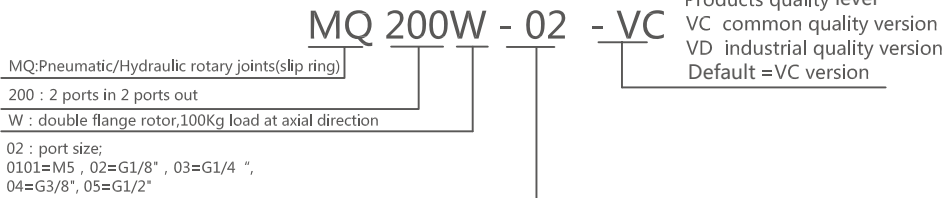
Technical support: [Technical@moflon.com](mailto:Technical@moflon.com)

# MQ200W Series (Double Flange Rotor 2 Port In 2 Ports Out Fluid Rotary Unions)

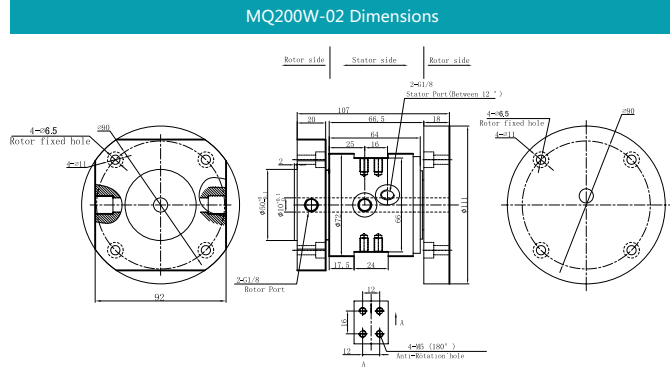
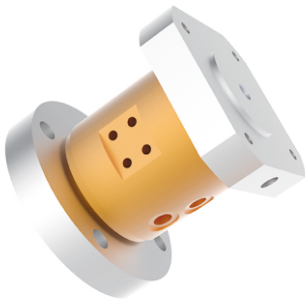


MQ200W Pneumatic/Hydraulic rotary joints, optional size for M5,G1/8, G1/4,G3/8,G1/2,it can be customized for larger port,for example G1", G2", medias: compressed air,vacuum,hydrogen,nitrogen,Chemical mixed gas,steam,cooling water,hot water,hot oil,petroleum,vitriol,drink.etc.

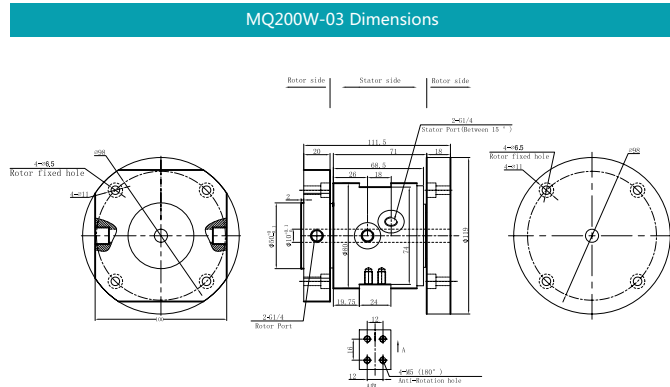
## Part# Explanation



### G1/8 Port



### G1/4 Port



## Part# list

MQ200W series Pneumatic/Hydraulic rotary joints parts list			
Part#	Pneumatic/Hydraulic passages	Max Torque(n.m)	Port Size
MQ200W-02	2 in 2 out	1.6	G1/8 "
MQ200W-03	2 in 2 out	2.4	G1/4 "

## Specifications

Rotary joints Technique Data	
Parameter	Value
Passages	2 ports in 2 ports out
Max Pressure	10MPa (can be customized) , vacuum 0.01torr
Media	Air,vacuum,hydraulic oil , water,hot water,cooling water,steam etc
Torque	See part list above
Mechanical Data	
Parameter	Value
Working Life	See product quality level table
Rotating Speed	See product quality level table
Working Temperature	-30°C~80°C
Operating Humidity	0~85% RH
Sealing Element	See product quality level table
Housing Materials	aluminium alloy/stainless steel
Protection Grade	IP51

## Product Quality Level Table

Products Level Code	Max Rotating Speed	Working Life	Sealing Element
VC	100RPM	6 millions revs	Common Sealing Element
VD	300RPM	20 millions revs	High-Quality Sealing Element

## Options for custom slip ring

Notes:it can be customized as below requirements,lead time would increase 3~15 days,price would increase 5%~50%.Most basic parts of slip ring are standard and modularized,which saved costs and lead time.

- 1 Port size
- 2 Pressure
- 3 Rotating speed
- 4 Through bore size
- 5 Corrosive media,all stainless steel,anti-explosion,high temp etc.
- 6 Can combine with electrical slip ring

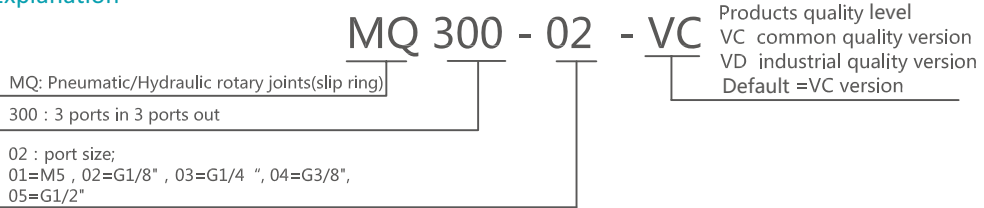
Technical support: [Technical@moflon.com](mailto:Technical@moflon.com)

# MQ300 Series (3 Port In 3 Port Out Fluid Rotary Unions)



MQ300 Pneumatic/Hydraulic rotary joints, optional size for M5,G1/8, G1/4,G3/8,G1/2,it can be customized for larger port,for example G1", G2", medias: compressed air,vacuum,hydrogen,nitrogen,Chemical mixed gas,steam,cooling water,hot water,hot oil,petroleum,vitriol,drink etc.

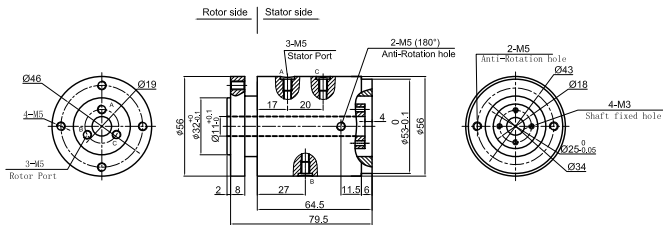
## Part# Explanation



M5 Port



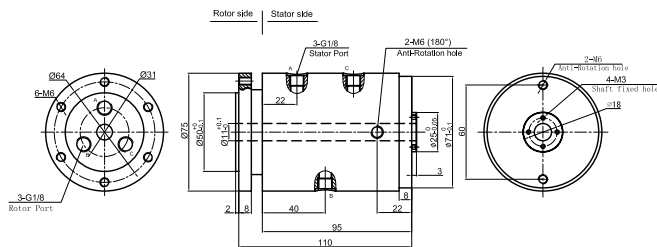
MQ300-01 Dimensions



G1/8 Port



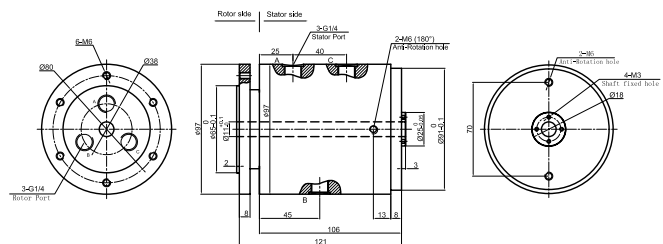
MQ300-02 Dimensions



G1/4 Port



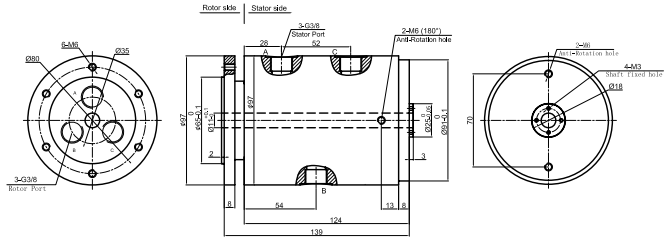
MQ300-03 Dimensions



G3/8 Port



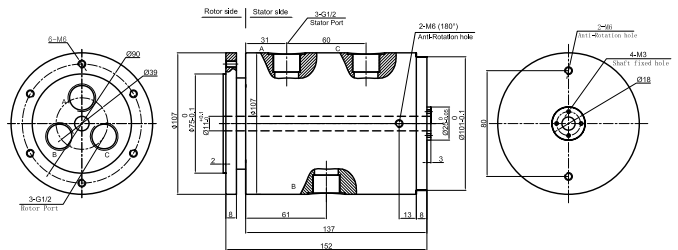
MQ300-04 Dimensions



G1/2 Port



MQ300-05 Dimensions



### Part# list

MQ300 series Pneumatic/Hydraulic rotary joints part list							
Part#	Pneumatic/Hydraulic passages	Max torque (N.M)	Port size	Part#	Pneumatic/Hydraulic passages	Max torque (N.M)	Port size
MQ300-01	2 in 2 out	1.2	M5	MQ300-04	2 in 2 out	4	G3/8 "
MQ300-02	2 in 2 out	2.6	G1/8 "	MQ300-05	2 in 2 out	4.5	G1/2 "
MQ300-03	2 in 2 out	3.4	G1/4 "				

### Specifications

Mechanical Data		Rotary Joints Technique Data	
Parameter	Value	Parameter	Value
Working Life	See product quality level table	Passages	3 ports in 3 ports out
Rotating Speed	See product quality level table	Max Pressure	10MPa (can be customized) , vacuum 0.01torr
Working Temperature	-30°C~80°C	Media	Air,vacuum,hydraulic oil,water,hot water,cooling water,steam etc
Operating Humidity	0~85% RH	Torque	See part list above
Sealing Element	See product quality level table		
Housing Materials	aluminium alloy/stainless steel		
Protection Grade	IP51		

### Product Quality Level Table

Products Level Code	Max Rotating Speed	Working Life	Sealing Element
VC	100RPM	6 millions revs	Common Sealing Element
VD	300RPM	20 millions revs	High-Quality Sealing Element

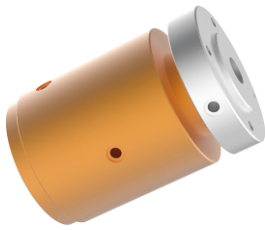
### Options for custom slip ring

Notes:it can be customized as below requirements,lead time would increase 3~15 days,price would increase 5%~50%.Most basic parts of slip ring are standard and modularized,which saved costs and lead time.

- 1 Port size
- 2 Pressure
- 3 Rotating speed
- 4 Through bore size
- 5 Corrosive media,all stainless steel,anti-explosion,high temp etc.
- 6 Can combine with electrical slip ring

Technical support: Technical@moflon.com

# MQ300F Series (3 Port In 3 Port Out Fluid Rotary Unions)



MQ300F Pneumatic/Hydraulic rotary joints, optional size for M5,G1/8, G1/4,G3/8,G1/2,it can be customized for larger port,for example G1", G2", medias: compressed air,vacuum,hydrogen,nitrogen,Chemical mixed gas,steam,cooling water,hot water,hot oil,petroleum,vitriol,drink.etc.

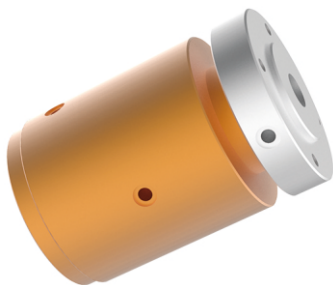
## Part# Explanation

**MQ 300F - 02 - VC**

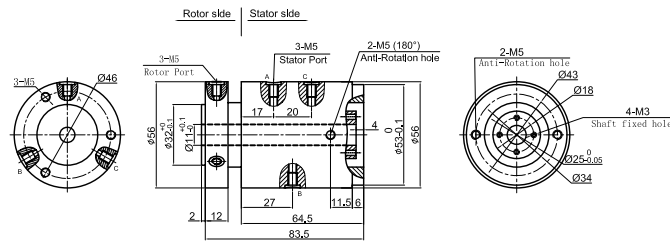
MQ:Pneumatic/Hydraulic rotary joints(slip ring)  
 300 : 3 ports in 3 ports out  
 F : port exit from the side of flange  
 02 : port size;  
 01=M5 , 02=G1/8" , 03=G1/4 " , 04=G3/8" ,  
 05=G1/2"

Products quality level  
 VC common quality version  
 VD industrial quality version  
 Default =VC version

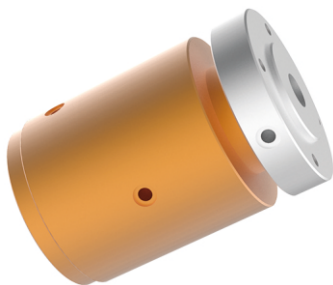
### M5 Port



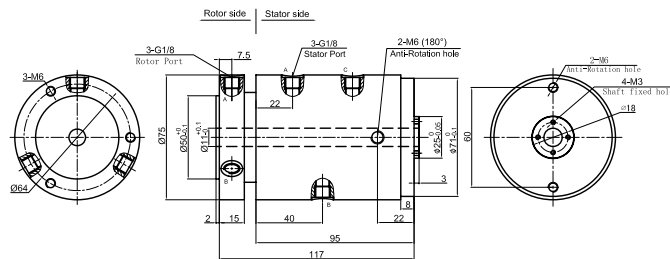
### MQ300F-01 Dimensions



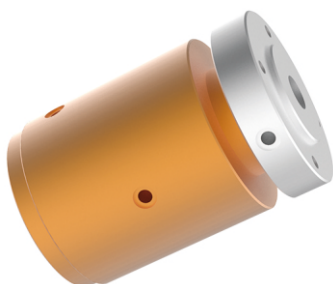
### G1/8 Port



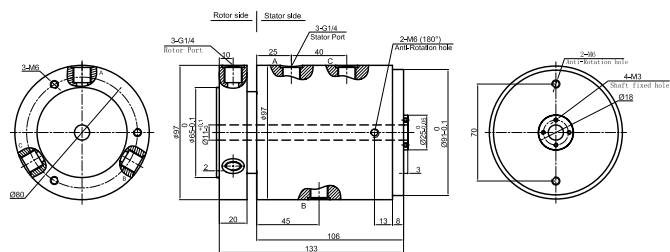
### MQ300F-02 Dimensions

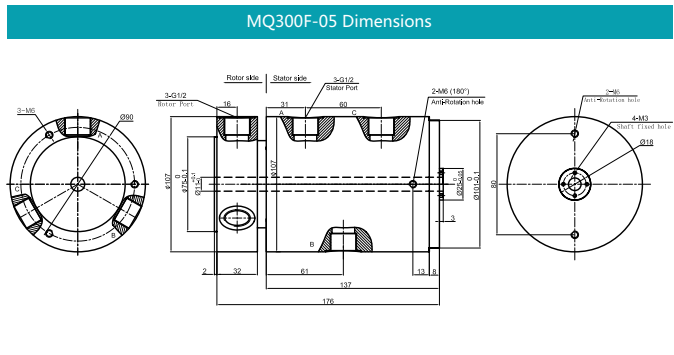
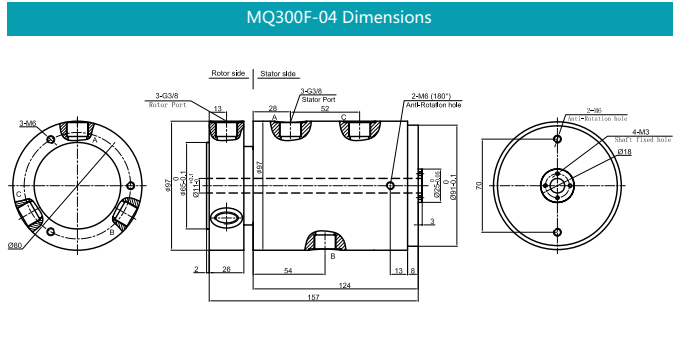


### G1/4 Port



### MQ300F-03 Dimensions





### Part# list

MQ300F series Pneumatic/Hydraulic rotary joints part list							
Part#	Pneumatic/Hydraulic passages	Max torque (N.M)	Port size	Part#	Pneumatic/Hydraulic passages	Max torque (N.M)	Port size
MQ300F-01	3 in 3 out	1.2	M5	MQ300F-04	3 in 3 out	4	G3/8 "
MQ300F-02	3 in 3 out	2.6	G1/8 "	MQ300F-05	3 in 3 out	4.5	G1/2 "
MQ300F-03	3 in 3 out	3.4	G1/4 "				

### Specifications

Mechanical Data		Rotary Joints Technique Data	
Parameter	Value	Parameter	Value
Working Life	See product quality level table	Passages	3 ports in 3 ports out
Rotating Speed	See product quality level table	Max Pressure	10MPa (can be customized) , vacuum 0.01torr
Working Temperature	-30°C~80°C	Media	Air,vacuum,hydraulic oil,water,hot water,cooling water,steam etc
Operating Humidity	0~85% RH	Torque	See part list above
Sealing Element	See product quality level table		
Housing Materials	aluminium alloy/stainless steel		
Protection Grade	IP51		

### Product Quality Level Table

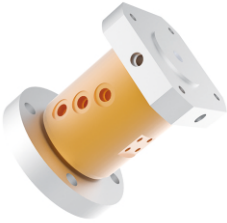
Products Level Code	Max Rotating Speed	Working Life	Sealing Element
VC	100RPM	6 millions revs	Common Sealing Element
VD	300RPM	20 millions revs	High-Quality Sealing Element

### Options for custom slip ring

Notes:it can be customized as below requirements,lead time would increase 3~15 days,price would increase 5%~50%.Most basic parts of slip ring are standard and modularized,which saved costs and lead time.

- 1 Port size
  - 2 Pressure
  - 3 Rotating speed
  - 4 Through bore size
  - 5 Corrosive media,all stainless steel,anti-explosion,high temp etc.
  - 6 Can combine with electrical slip ring
- Technical support: Technical@moflon.com

# MQ300W Series (Double Flange Rotor 3 Port In 3 Ports Out Fluid Rotary Unions)



MQ300W Pneumatic/Hydraulic rotary joints, optional size for M5,G1/8, G1/4,G3/8,G1/2,it can be customized for larger port,for example G1", G2",medias: compressed air,vacuum,hydrogen,nitrogen,Chemical mixed gas,steam,cooling water,hot water,hot oil,petroleum,vitriol,drink.etc.

## Part# Explanation

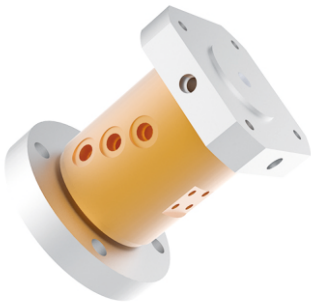
**MQ 300W - 02 - VC**

Products quality level  
 VC common quality version  
 VD industrial quality version  
 Default =VC version

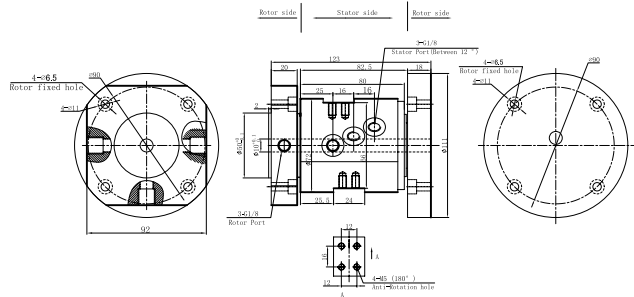
MQ: Pneumatic/Hydraulic rotary joints(slip ring)  
 300 : 3 ports in 3 ports out  
 W : double flange rotor,100Kg load at axial direction

02 : port size;  
 0101=M5 , 02=G1/8" , 03=G1/4 " ,  
 04=G3/8" , 05=G1/2"

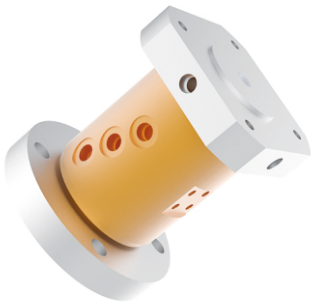
### G1/8 Port



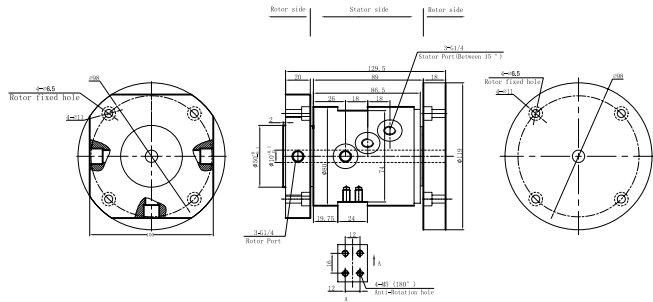
### MQ300W-02 Dimensions



### G1/4 Port



### MQ300W-03 Dimensions



## Part# list

MQ300W series Pneumatic/Hydraulic rotary joints parts list			
Part#	Pneumatic/Hydraulic passages	Max torque(N.M)	Port size
MQ300W-02	3 in 3 out	1.6	G1/8 "
MQ300W-03	3 in 3 out	2.4	G1/4 "



## Specifications

Rotary joints Technique Data	
Parameter	Value
Passages	3 ports in 3 ports out
Max Pressure	10MPa (can be customized) , vacuum 0.01torr
Media	Air,vacuum,hydraulic oil , water,hot water,cooling water,steam etc
Torque	See part list above
Mechanical Data	
Parameter	Value
Working Life	See product quality level table
Rotating Speed	See product quality level table
Working Temperature	-30°C~80°C
Operating Humidity	0~85% RH
Sealing Element	See product quality level table
Housing Materials	aluminium alloy/stainless steel
Protection Grade	IP51

## Product Quality Level Table

Products Level Code	Max Rotating Speed	Working Life	Sealing Element
VC	100RPM	6 millions revs	Common Sealing Element
VD	300RPM	20 millions revs	High-Quality Sealing Element

## Options for custom slip ring

Notes:it can be customized as below requirements,lead time would increase 3~15 days,price would increase 5%~50%.Most basic parts of slip ring are standard and modularized,which saved costs and lead time.

- 1 Port size
- 2 Pressure
- 3 Rotating speed
- 4 Through bore size
- 5 Corrosive media,all stainless steel,anti-explosion,high temp etc.
- 6 Can combine with electrical slip ring

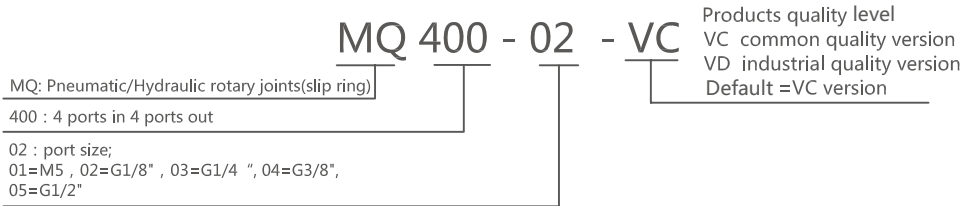
Technical support: [Technical@moflon.com](mailto:Technical@moflon.com)

# MQ400 Series (4 Port In 4 Port Out Fluid Rotary Unions)



MQ400 Pneumatic/Hydraulic rotary joints, optional size for M5,G1/8, G1/4,G3/8,G1/2,it can be customized for larger port,for example G1", G2", medias: compressed air,vacuum,hydrogen,nitrogen,Chemical mixed gas,steam,cooling water,hot water,hot oil,petroleum,vitriol,drink.etc.

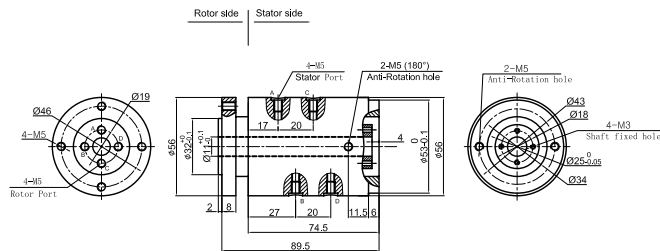
## Part# Explanation



M5 Port



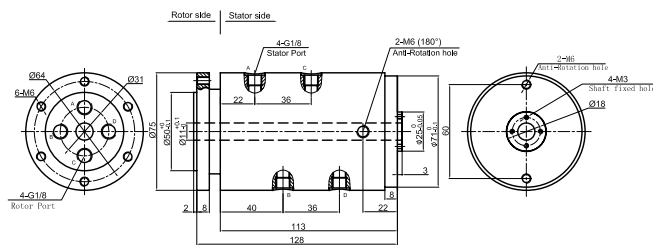
MQ400-01 Dimensions



G1/8 Port



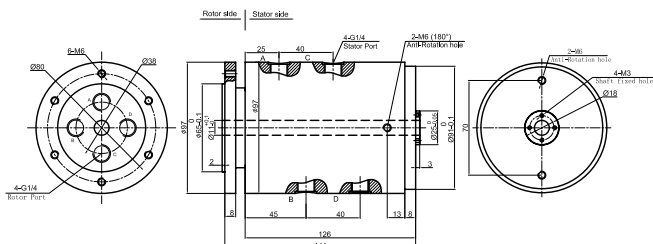
MQ400-02 Dimensions



G1/4 Port



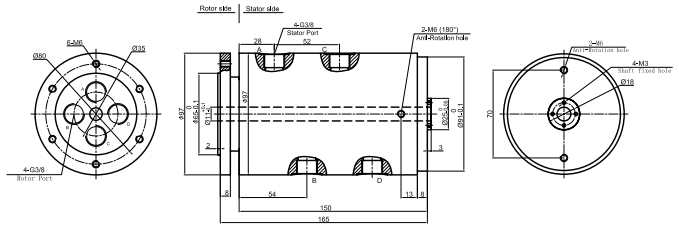
MQ400-03 Dimensions



G3/8 Port



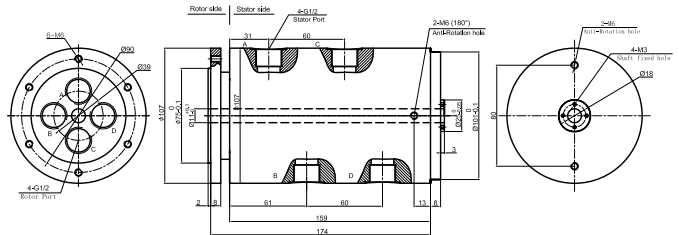
MQ400-04 Dimensions



G1/2 port



MQ400-05 Dimensions



### Part# list

MQ400 series Pneumatic/Hydraulic rotary joints part list							
Part#	Pneumatic/Hydraulic passages	Max torque (N.M)	Port size	Part#	Pneumatic/Hydraulic passages	Max torque (N.M)	Port size
MQ400-01	4 in 4 out	1.8	M5	MQ400-04	4 in 4 out	4.6	G3/8 "
MQ400-02	4 in 4 out	3.2	G1/8 "	MQ400-05	4 in 4 out	6.1	G1/2 "
MQ400-03	4 in 4 out	4	G1/4 "				

### Specifications

Mechanical Data		Rotary Joints Technique Data	
Parameter	Value	Parameter	Value
Working Life	See product quality level table	Passages	4 ports in 4 ports out
Rotating Speed	See product quality level table	Max Pressure	10MPa (can be customized) , vacuum 0.01torr
Working Temperature	-30°C~80°C	Media	Air,vacuum,hydraulic oil,water,hot water,cooling water,steam etc
Operating Humidity	0~85% RH	Torque	See part list above
Sealing Element	See product quality level table		
Housing Materials	aluminium alloy/stainless steel		
Protection Grade	IP51		

### Product Quality Level Table

Products Level Code	Max Rotating Speed	Working Life	Sealing Element
VC	100RPM	6 millions revs	Common Sealing Element
VD	300RPM	20 millions revs	High-Quality Sealing Element

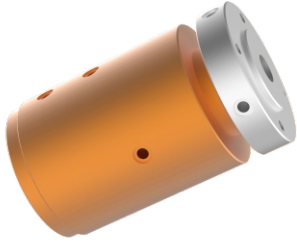
### Options for custom slip ring

Notes:it can be customized as below requirements,lead time would increase 3~15 days,price would increase 5%~50%.Most basic parts of slip ring are standard and modularized,which saved costs and lead time.

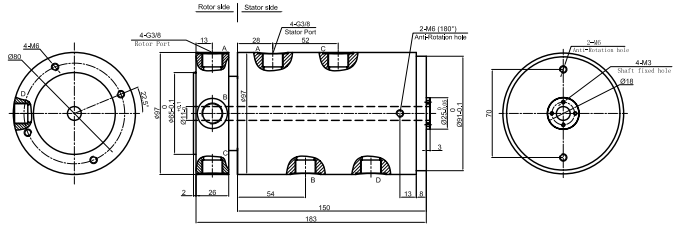
- 1 Port size
  - 2 Pressure
  - 3 Rotating speed
  - 4 Through bore size
  - 5 Corrosive media,all stainless steel,anti-explosion,high temp etc.
  - 6 Can combine with electrical slip ring
- Technical support: Technical@moflon.com



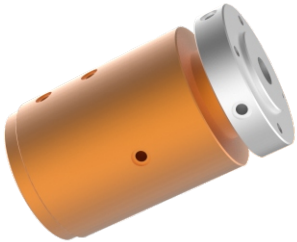
## G3/8 Port



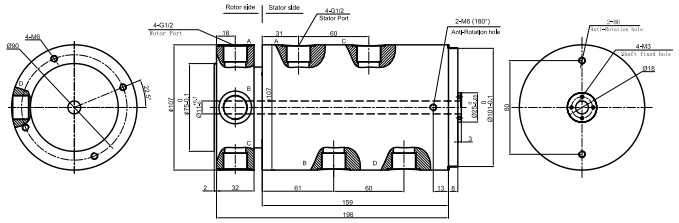
## MQ400F-04 Dimensions



## G1/2 Port



## MQ400F-05 Dimensions



### Part# list

MQ400F series Pneumatic/Hydraulic rotary joints part list							
Part#	Pneumatic/Hydraulic passages	Max torque (N.M)	Port size	Part#	Pneumatic/Hydraulic passages	Max torque (N.M)	Port size
MQ400F-01	4 in 4 out	1.8	M5	MQ400F-04	4 in 4 out	4.6	G3/8 "
MQ400F-02	4 in 4 out	3.2	G1/8 "	MQ400F-05	4 in 4 out	6.1	G1/2 "
MQ400F-03	4 in 4 out	4	G1/4 "				

### Specifications

Mechanical Data		Rotary Joints Technique Data	
Parameter	Value	Parameter	Value
Working Life	See product quality level table	Passages	4 ports in 4 ports out
Rotating Speed	See product quality level table	Max Pressure	10MPa (can be customized) , vacuum 0.01torr
Working Temperature	-30°C~80°C	Media	Air,vacuum,hydraulic oil,water,hot water,cooling water,steam etc.
Operating Humidity	0~85% RH	Torque	See part list above
Sealing Element	See product quality level table		
Housing Materials	aluminium alloy/stainless steel		
Protection Grade	IP51		

### Product Quality Level Table

Products Level Code	Max Rotating Speed	Working Life	Sealing Element
VC	100RPM	6 millions revs	Common Sealing Element
VD	300RPM	20 millions revs	High-Quality Sealing Element

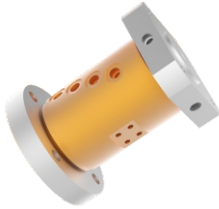
### Options for custom slip ring

Notes:it can be customized as below requirements,lead time would increase 3~15 days,price would increase 5%~50%.Most basic parts of slip ring are standard and modularized,which saved costs and lead time.

- 1 Port size
- 2 Pressure
- 3 Rotating speed
- 4 Through bore size
- 5 Corrosive media,all stainless steel,anti-explosion,high temp etc.
- 6 Can combine with electrical slip ring

Technical support: Technical@moflon.com

# MQ400W Series (Double Flange Rotor 4 Port In 4 Ports Out Fluid Rotary Unions)



MQ400W Pneumatic/Hydraulic rotary joints, optional size for M5,G1/8, G1/4,G3/8,G1/2,it can be customized for larger port,for example G1", G2",medias: compressed air,vacuum,hydrogen,nitrogen,Chemical mixed gas,steam,cooling water,hot water,hot oil,petroleum,vitriol,drink.etc.

## Part# Explanation

MQ 400W - 02 - VC

MQ: Pneumatic/Hydraulic rotary joints(slip ring)

400 : 4 ports in 4 ports out

W : double flange rotor,100Kg load at axial direction

02 : port size;  
 01=M5 , 02=G1/8" , 03=G1/4 " , 04=G3/8" ,  
 05=G1/2"

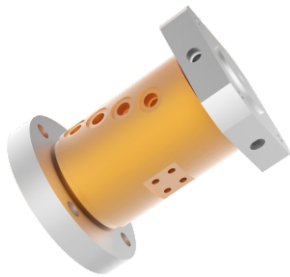
Products quality level

VC common quality version

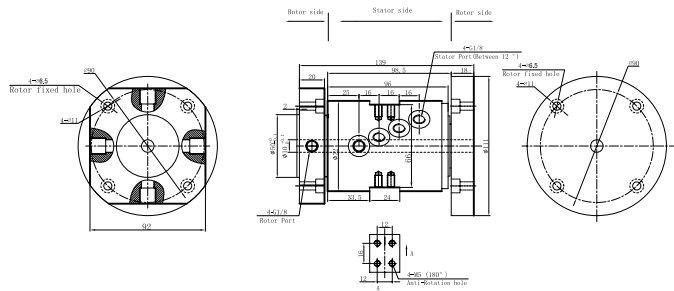
VD industrial quality version

Default =VC version

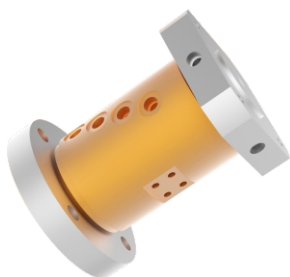
### G1/8 Port



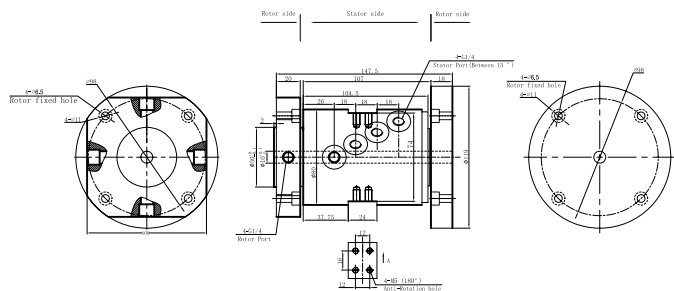
### MQ400W-02 Dimensions



### G1/4 Port



### MQ400W-03 Dimensions



## Part# list

MQ400W series Pneumatic/Hydraulic rotary joints part list

Part#	Pneumatic/Hydraulic passages	Max torque(N.M)	Port size
MQ400W-01	4 in 4 out	1.8	M5
MQ400W-02	4 in 4 out	3.2	G1/8 "
MQ400W-03	4 in 4 out	4.0	G1/4 "
MQ400W-04	4 in 4 out	4.6	G3/8 "
MQ400W-05	4 in 4 out	6.1	G1/2 "

## Specifications

Rotary joints Technique Data	
Parameter	Value
Passages	4 ports in 4 ports out
Max Pressure	10MPa (can be customized) , vacuum 0.01torr
Media	Air,vacuum,hydraulic oil , water,hot water,cooling water,steam etc.
Torque	See part list above
Mechanical Data	
Parameter	Value
Working Life	See product quality level table
Rotating Speed	See product quality level table
Working Temperature	-30°C~80°C
Operating Humidity	0~85% RH
Sealing Element	See product quality level table
Housing Materials	aluminium alloy/stainless steel
Protection Grade	IP51

## Product Quality Level Table

Products Level Code	Max Rotating Speed	Working Life	Sealing Element
VC	100RPM	6 millions revs	Common Sealing Element
VD	300RPM	20 millions revs	High-Quality Sealing Element

## Options for custom slip ring

Notes:it can be customized as below requirements,lead time would increase 3~15 days,price would increase 5%~50%.Most basic parts of slip ring are standard and modularized,which saved costs and lead time.

- 1 Port size
- 2 Pressure
- 3 Rotating speed
- 4 Through bore size
- 5 Corrosive media,all stainless steel,anti-explosion,high temp etc.
- 6 Can combine with electrical slip ring

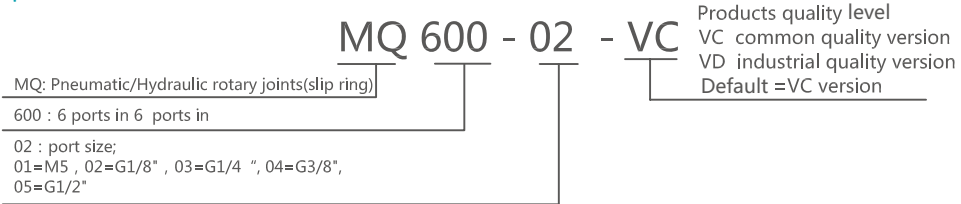
Technical support: [Technical@moflon.com](mailto:Technical@moflon.com)

# MQ600 Series (6 Port In 6 Port Out Fluid Rotary Unions)



MQ600 Pneumatic/Hydraulic rotary joints, optional size for M5,G1/8, G1/4,G3/8,G1/2,it can be customized for larger port,for example G1", G2", medias: compressed air,vacuum,hydrogen,nitrogen,Chemical mixed gas,steam,cooling water,hot water,hot oil,petroleum,vitriol,drink.etc.

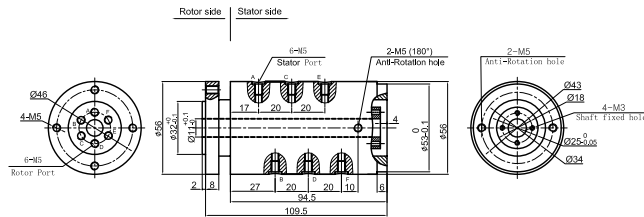
## Part# Explanation



M5 Port



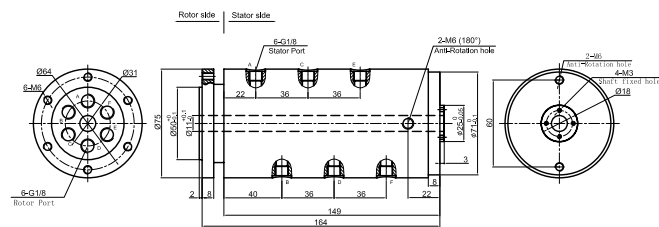
MQ600-01 Dimensions



G1/8 port



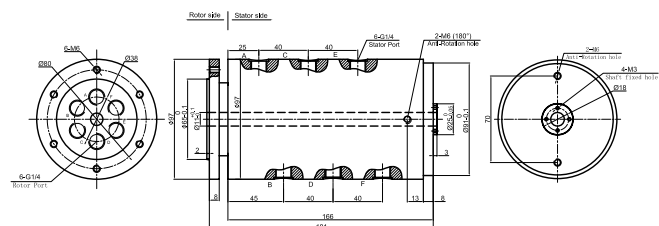
MQ600-02 Dimensions



G1/4 port



MQ600-03 Dimensions





## Part# list

MQ600 series Pneumatic/Hydraulic rotary joints part list			
Part#	Pneumatic/Hydraulic passages	Max torque(N.M)	Port size
MQ600-01	6 in 6 out	2.4	M5
MQ600-02	6 in 6 out	3.8	G1/8 "
MQ600-03	6 in 6 out	4.8	G1/4 "

## Specifications

Rotary joints Technique Data	
Parameter	Value
Passages	6 ports in 6 ports out
Max Pressure	10MPa (can be customized) , vacuum 0.01torr
Media	Air,vacuum,hydraulic oil , water,hot water,cooling water,steam etc.
Torque	See part list above
Mechanical Data	
Parameter	Value
Working Life	See product quality level table
Rotating Speed	See product quality level table
Working Temperature	-30°C~80°C
Operating Humidity	0~85% RH
Sealing Element	See product quality level table
Housing Materials	aluminium alloy/stainless steel
Protection Grade	IP51

## Product Quality Level Table

Products Level Code	Max Rotating Speed	Working Life	Sealing Element
VC	100RPM	6 millions revs	Common Sealing Element
VD	300RPM	20 millions revs	High-Quality Sealing Element

## Options for custom slip ring

Notes:it can be customized as below requirements,lead time would increase 3~15 days,price would increase 5%~50%.Most basic parts of slip ring are standard and modularized,which saved costs and lead time.

1 Port size

2 Pressure

3 Rotating speed

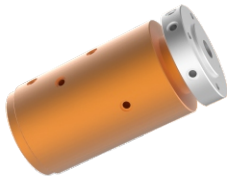
4 Through bore size

5 Corrosive media,all stainless steel,anti-explosion,high temp etc.

6 Can combine with electrical slip ring

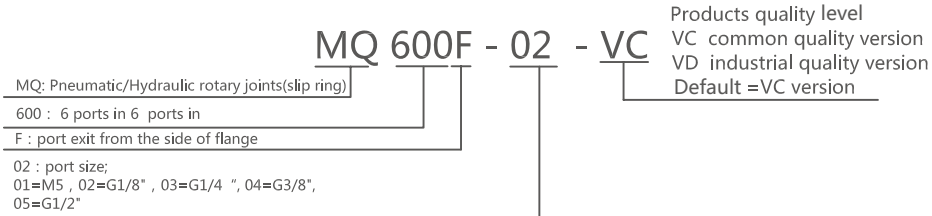
Technical support: Technical@moflon.com

# MQ600F Series (6 Port In 6 Port Out Fluid Rotary Unions)

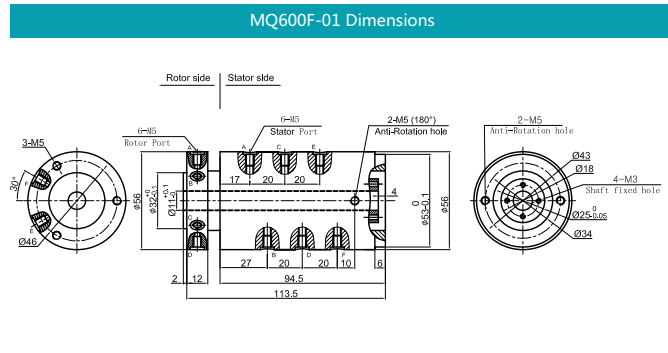


MQ600F Pneumatic/Hydraulic rotary joints, optional size for M5,G1/8, G1/4,G3/8,G1/2,it can be customized for larger port,for example G1", G2", medias: compressed air,vacuum,hydrogen,nitrogen,Chemical mixed gas,steam,cooling water,hot water,hot oil,petroleum,vitriol,drink.etc.

## Part# Explanation



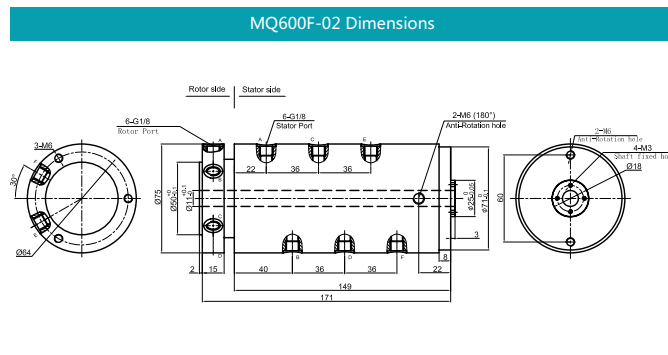
M5 Port



MQ600F-01 Dimensions



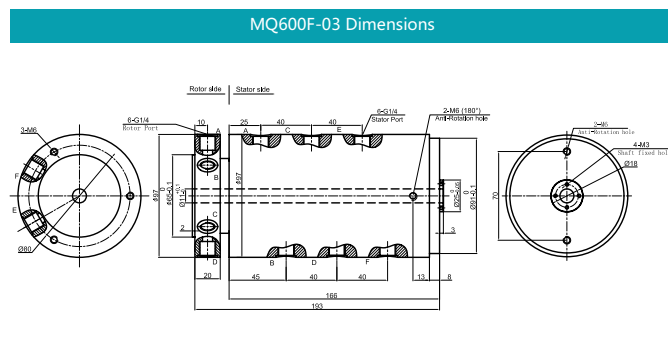
G1/8 Port



MQ600F-02 Dimensions



G1/4 Port



MQ600F-03 Dimensions

## Part# list

MQ600F series Pneumatic/Hydraulic rotary joints part list			
Part#	Pneumatic/Hydraulic passages	Max torque(N.M)	Port size
MQ600F-01	6 in 6 out	2.4	M5
MQ600F-02	6 in 6 out	3.8	G1/8 "
MQ600F-03	6 in 6 out	4.8	G1/4 "

## Specifications

Rotary joints Technique Data	
Parameter	Value
Passages	6 ports in 6 ports out
Max Pressure	10MPa (can be customized) , vacuum 0.01torr
Media	Air,vacuum,hydraulic oil , water,hot water,cooling water,steam etc.
Torque	See part list above
Mechanical Data	
Parameter	Value
Working Life	See product quality level table
Rotating Speed	See product quality level table
Working Temperature	-30°C~80°C
Operating Humidity	0~85% RH
Sealing Element	See product quality level table
Housing Materials	aluminium alloy/stainless steel
Protection Grade	IP51

## Product Quality Level Table

Products Level Code	Max Rotating Speed	Working Life	Sealing Element
VC	100RPM	6 millions revs	Common Sealing Element
VD	300RPM	20 millions revs	High-Quality Sealing Element

## Options for custom slip ring

Notes:it can be customized as below requirements,lead time would increase 3~15 days,price would increase 5%~50%.Most basic parts of slip ring are standard and modularized,which saved costs and lead time.

1 Port size

2 Pressure

3 Rotating speed

4 Through bore size

5 Corrosive media,all stainless steel,anti-explosion,high temp etc.

6 Can combine with electrical slip ring

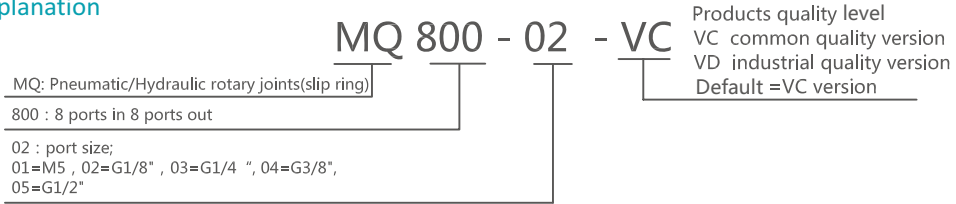
Technical support: Technical@moflon.com

# MQ800 Series(8 Port In 8 Port Out Fluid Rotary Unions)



MQ800 Pneumatic/Hydraulic rotary joints, optional size for M5,G1/8, G1/4,G3/8,G1/2,it can be customized for larger port,for example G1", G2", medias: compressed air,vacuum,hydrogen,nitrogen,Chemical mixed gas,steam,cooling water,hot water,hot oil,petroleum,vitriol,drink.etc.

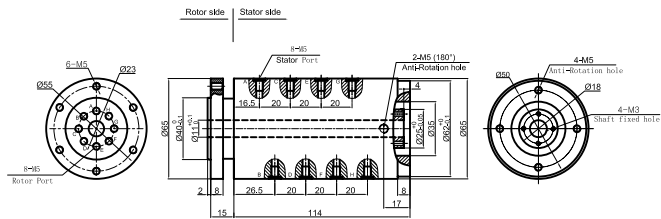
## Part# Explanation



M5 Port



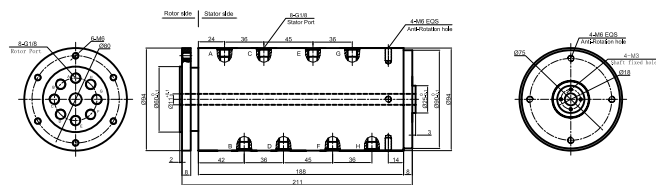
MQ800-01 Dimensions



G1/8 Port



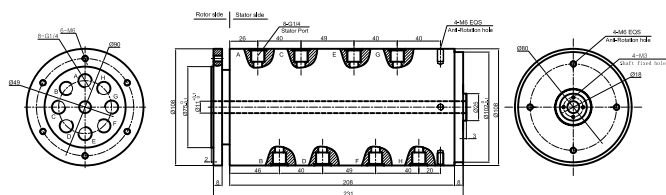
MQ800-02 Dimensions



G1/4 Port



MQ800-03 Dimensions



## Part# list

MQ800 series Pneumatic/Hydraulic rotary joints parts list			
Part#	Pneumatic/Hydraulic passages	Max torque(N.M)	Port size
MQ800-01	8 in 8 out	3.0	M5
MQ800-02	8 in 8 out	4.2	G1/8 "
MQ800-03	8 in 8 out	5.4	G1/4 "

## Specifications

Rotary joints Technique Data	
Parameter	Value
Passages	8 ports in 8 ports out
Max Pressure	10MPa (can be customized) , vacuum 0.01torr
Media	Air,vacuum,hydraulic oil , water,hot water,cooling water,steam etc
Torque	See part list above
Mechanical Data	
Parameter	Value
Working Life	See product quality level table
Rotating Speed	See product quality level table
Working Temperature	-30°C~80°C
Operating Humidity	0~85% RH
Sealing Element	See product quality level table
Housing Materials	aluminium alloy/stainless steel
Protection Grade	IP51

## Product Quality Level Table

Products Level Code	Max Rotating Speed	Working Life	Sealing Element
VC	100RPM	6 millions revs	Common Sealing Element
VD	300RPM	20 millions revs	High-Quality Sealing Element

## Options for custom slip ring

Notes:it can be customized as below requirements,lead time would increase 3~15 days,price would increase 5%~50%.Most basic parts of slip ring are standard and modularized,which saved costs and lead time.

1 Port size

2 Pressure

3 Rotating speed

4 Through bore size

5 Corrosive media,all stainless steel,anti-explosion,high temp etc.

6 Can combine with electrical slip ring

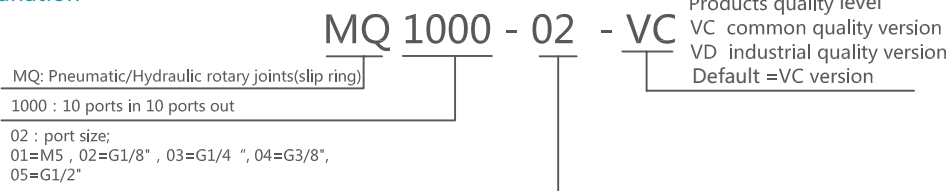
Technical support: Technical@moflon.com

# MQ1000 Series (10 Port In 10 Port Out Fluid Rotary Unions)



MQ1000 Pneumatic/Hydraulic rotary joints, optional size for M5,G1/8, G1/4,G3/8,G1/2,it can be customized for larger port,for example G1", G2",media: compressed air,vacuum,hydrogen,nitrogen,Chemical mixed gas,steam,cooling water,hot water,hot oil,petroleum,vitriol,drink.etc.

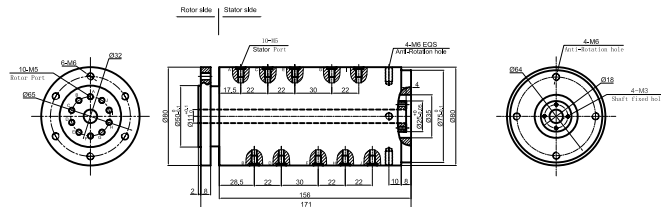
## Part# Explanation



M5 Port



MQ1000-01 Dimensions



## Part# list

MQ1000 series Pneumatic/Hydraulic rotary joints parts list

Part#	Pneumatic/Hydraulic passages	Max torque(N.M)	Port size
MQ1000-01	10 in 10 out	3.6	M5

## Specifications

Mechanical data		Rotary joints Technique Data	
Parameter	Value	Parameter	Value
Working Life	See product quality level table	Passages	10 ports in 10 ports out
Rotating Speed	See product quality level table	Max Pressure	10MPa (can be customized) , vacuum 0.01torr
Working Temperature	-30°C~80°C	Media	Air,vacuum,hydraulic oil , water,hot water,steam etc.
Operating Humidity	0~85% RH	Torque	See part list above
Sealing Element	See product quality level table		
Housing Materials	aluminium alloy/stainless steel		
Protection Grade	IP51		

## Product Quality Level Table

Products Level Code	Max Rotating Speed	Working Life	Sealing Element
VC	100RPM	6 millions revs	Common Sealing Element
VD	300RPM	20 millions revs	High-Quality Sealing Element

## Options for custom slip ring

Notes:it can be custumed as below requirements,lead time would increase 3~15 days,price would increase 5%~50%.Most basic parts of slip ring are standard and modularized,which saved costs and lead time.

1 port size.

2 pressure.

3 rotating speed.

4 through bore size.

5 corrosive media, all stainless steel,anti-explosion,high temp etc.

6 can combine with electrical slip ring.

Technical support: Technical@moflon.com

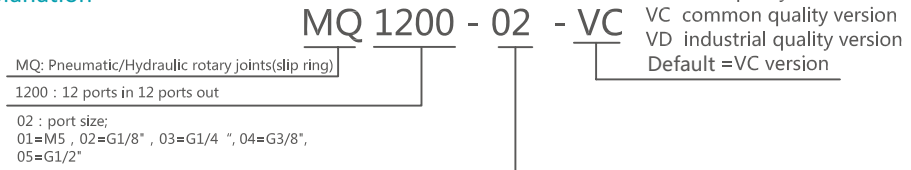
Web: <http://www.moflon.com> Email: [sales@moflon.com](mailto:sales@moflon.com)

# Mq1200 Series (12 Port In 12 Port Out Fluid Rotary Unions)



MQ1200 Pneumatic/Hydraulic rotary joints, optional size for M5,G1/8, G1/4,G3/8,G1/2,it can be customized for larger port,for example G1", G2",medias: compressed air,vacuum,hydrogen,nitrogen,Chemical mixed gas,steam,cooling water,hot water,hot oil,petroleum,vitriol,drink.etc.

## Part# Explanation



M5 Port

MQ1200-01 Dimensions

## Part# list

MQ1200 series Pneumatic/Hydraulic rotary joints parts list			
Part#	Pneumatic/Hydraulic passages	Max torque(N.M)	Port size
MQ1200-01	12 in 12 out	4.2	M5

## Specifications

Mechanical data		Rotary joints Technique Data	
Parameter	Value	Parameter	Value
Working Life	See product quality level table	Passages	12 ports in 12 ports out
Rotating Speed	See product quality level table	Max Pressure	10MPa (can be customized) , vacuum 0.01torr
Working Temperature	-30°C~80°C	Media	Air,vacuum,hydraulic oil , water,hot water,steam etc.
Operating Humidity	0~85% RH	Torque	See part list above
Sealing Element	See product quality level table		
Housing Materials	aluminium alloy/stainless steel		
Protection Grade	IP51		

## Product Quality Level Table

Products Level Code	Max Rotating Speed	Working Life	Sealing Element
VC	100RPM	6 millions revs	Common Sealing Element
VD	300RPM	20 millions revs	High-Quality Sealing Element

## Options for custom slip ring

Notes:it can be custumed as below requirements,lead time would increase 3~15 days,price would increase 5%~50%.Most basic parts of slip ring are standard and modularized,which saved costs and lead time.

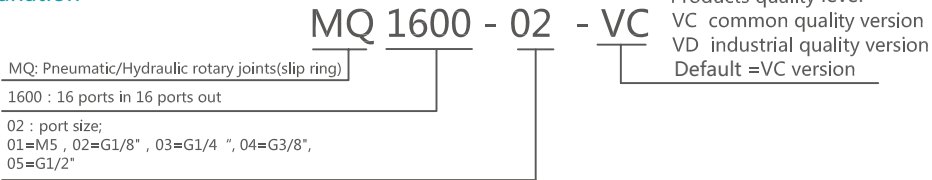
- |  |  |                   |
|--|--|-------------------|
| 1 port size.                             | 2 pressure.  | 3 rotating speed. |
| 4 through bore size.                     | 5 corrosive media, all stainless steel,anti-explosion,high temp etc. |                   |
| 6 can combine with electrical slip ring. | Technical support: Technical@moflon.com                              |                   |

# MQ1600 Series(16 Port In 16 Port Out Fluid Rotary Unions)



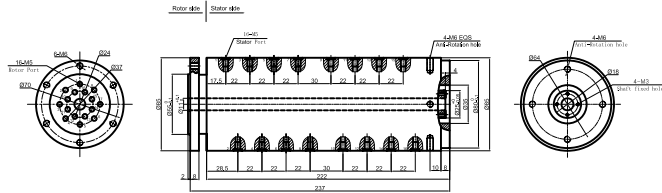
MQ1600 Pneumatic/Hydraulic rotary joints, optional size for M5,G1/8, G1/4,G3/8,G1/2,it can be customized for larger port,for example G1", G2", medias: compressed air,vacuum,hydrogen,nitrogen,Chemical mixed gas,steam,cooling water,hot water,hot oil,petroleum,vitriol,drink.etc.

## Part# Explanation



16 port in 16 port out , M5 port

MQ1600-01 Dimensions



## Part# list

MQ1200 series Pneumatic/Hydraulic rotary joints parts list			
Part#	Pneumatic/Hydraulic passages	Max torque(N.M)	Port size
MQ1600-01	16 in 16 out	5.6	M5

## Specifications

Mechanical data		Rotary joints Technique Data	
Parameter	Value	Parameter	Value
Working Life	See product quality level table	Passages	16 ports in 16 ports out
Rotating Speed	See product quality level table	Max Pressure	10MPa (can be customized) , vacuum 0.01torr
Working Temperature	-30°C~80°C	Media	Air,vacuum,hydraulic oil , water,hot water,steam etc.
Operating Humidity	0~85% RH	Torque	See part list above
Sealing Element	See product quality level table		
Housing Materials	aluminium alloy/stainless steel		
Protection Grade	IP51		

## Product Quality Level Table

Products Level Code	Max Rotating Speed	Working Life	Sealing Element
VC	100RPM	6 millions revs	Common Sealing Element
VD	300RPM	20 millions revs	High-Quality Sealing Element

## Options for custom slip ring

Notes:it can be custumed as below requirements,lead time would increase 3~15 days,price would increase 5%~50%.Most basic parts of slip ring are standard and modularized,which saved costs and lead time.

- 1 port size.
- 2 pressure.
- 3 rotating speed.
- 4 through bore size.
- 5 corrosive media, all stainless steel,anti-explosion,high temp etc.
- 6 can combined with electrical slip ring.
- Technical support: Technical@moflon.com