

# KBE Series Rotary joints

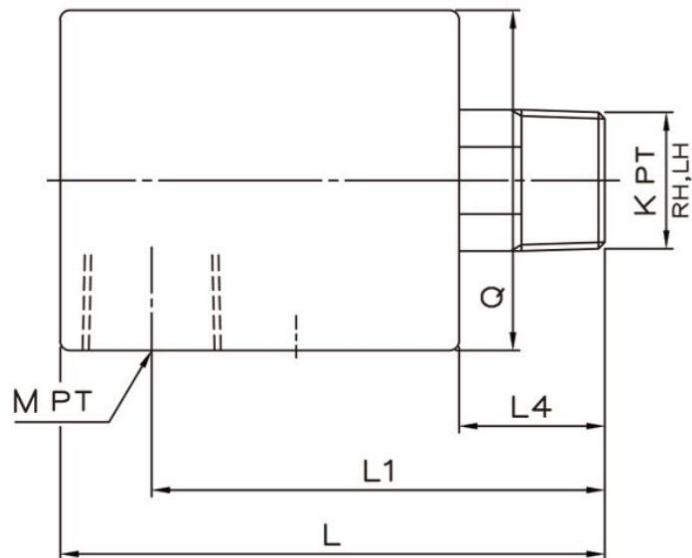
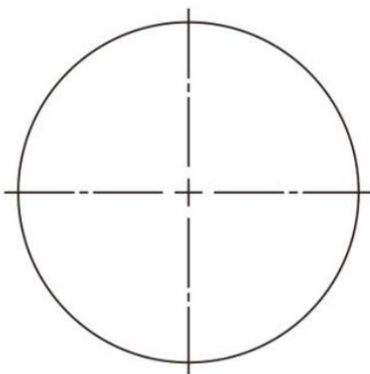


Applicable medium	Temperature	Max pressure	Max Rotary Speed
Water	-30~80°C	1.0Mpa	3000RPM
Air			
Coolant			

## Product Features

- ▲ Balanced mechanical air seal design, using stainless steel springs to compensate for wear and tear, longer life cycle;
- ▲ The sealing material is a wear-resistant tungsten carbide material imported from Germany to ensure high quality and high pressure resistance;
- ▲ Double bearings, using imported bearings to ensure that the deflection and clearance are in the ideal range at high speeds;
- ▲ The stainless steel shaft is heat-treated and ground to ensure rigidity without deformation for a long time and no eccentric force;
- ▲ A pair of friction pairs are processed by mirror grinding to ensure long life and high pressure resistance.

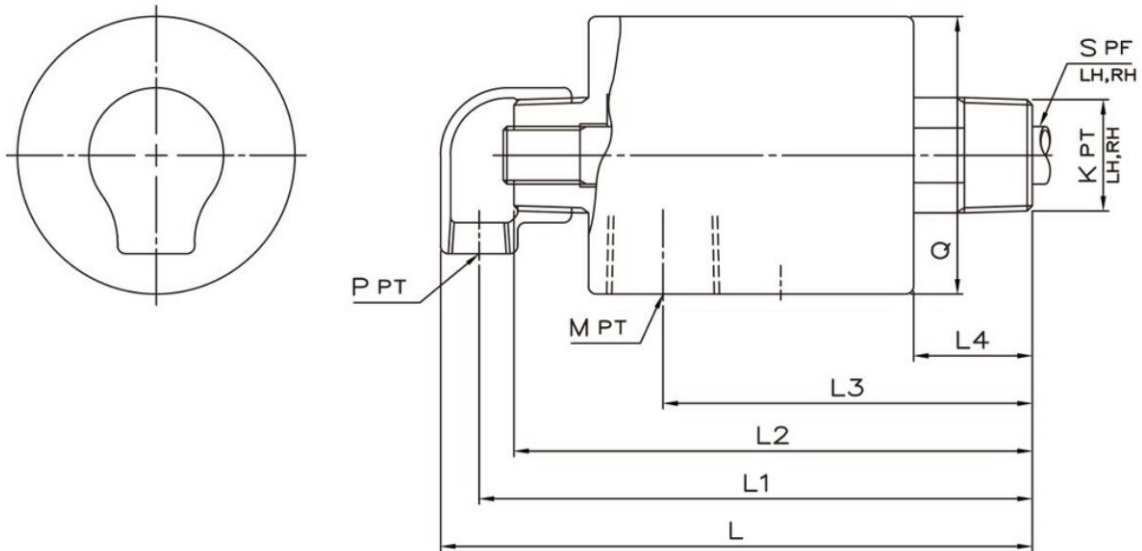
## Single Channel



Single Channel Model selection table

Standard Size		K	M	L	L1	L4	Q
10A	3/8"	3/8"	3/8"	102	87	27	45
15A	1/2"	1/2"	1/2"	116	100	30	57
20A	3/4"	3/4"	3/4"	134.5	114	33	67
25A	1"	1"	1"	150	125	36	74
32A	1.1/4"	1.1/4"	1.1/4"	167	140	39	88
40A	1.1/2"	1.1/2"	1.1/2"	182	148	42	93

Two-Channel



Two-Channel Model Selection table

Standard Size		K	M	P	S	L	L1	L2	L3	L4	Q
10A	3/8"(B)	3/8"	1/4"	1/4"	7	136	126	115	86	27	45
15A	1/2"(B)	1/2"	3/8"	3/8"	1/8"	157	145.5	131	100	30	57
20A	3/4"(B)	3/4"	1/2"	1/2"	1/4"	179	165	148	112	33	67
25A	1"(B)	1"	1/2"	1/2"	3/8"	192	178	157	120	36	74
32A	1.1/4"	1.1/4"	3/4"	3/4"	1/2"	216	199	175	132	39	88
40A	1.1/2"(B)	1.1/2"	1"	1"	3/4"	235	214	189	140	42	93