

KMT Series Hydraulic swivel joints

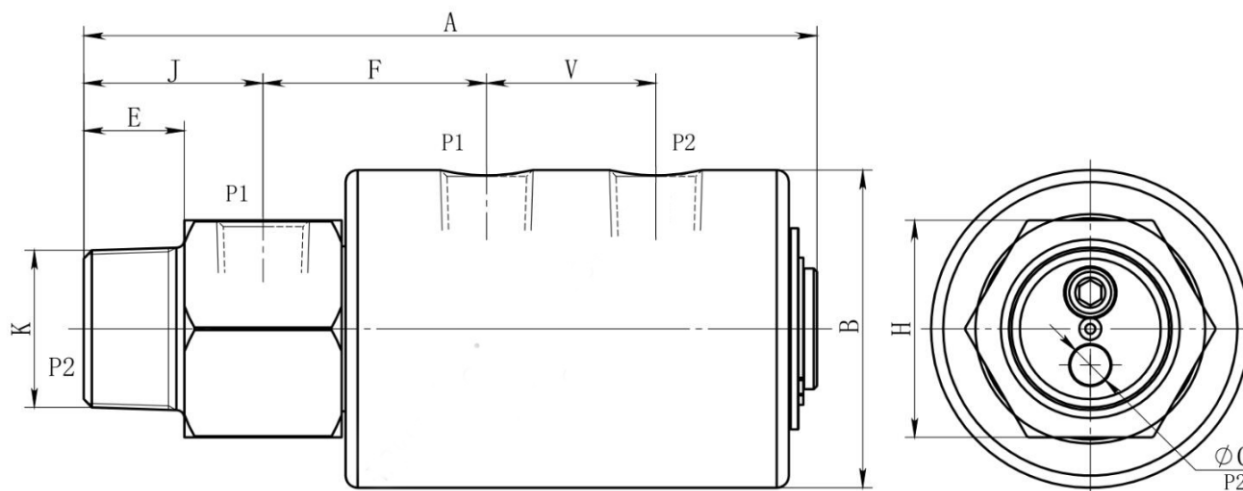
Applicable medium	Temperature	Max pressure	Max Rotary Speed
Compressed air	-30~ +80°C	1.1Mpa	300RPM
Hydraulic oil Series			



Product Features

- ▲ Two wide precision bearings support, ensuring smooth operation and lifelong maintenance free bearing;
- ▲ Imported specialized sealing components ensure longevity and destiny;
- ▲ Specially treated core shaft to ensure sufficient wear resistance;
- ▲ The shell is made of aluminum alloy;
- ▲ Special products can be customized according to customer conditions.

Dimension



Types of	DN	Model	k	P1/P2	A	B	C	E	J	F	V	H
KMT02	20	KMT02020.01	R3/4"-RH	Rc3/8"	155	69	6	22	38	47	34	46
	25	KMT02025.01	R1"-RH	Rc3/8"	155	69	8	22	38	47	34	46
	32	KMT02032.01	R1"-1/4"-RH	Rc1/2"	182	79	12	25	45	56	42	54
	40	KMT02040.01	R1"-1/2"-RH	Rc3/4"	193	88	15	28	4	57	44	65