

# MGP6 (6-in, 6-out, multi-function swivel/fluid slip ring)

## Model description

### MGP6 1-ID12-VC

MCGP: Compact Multi-function Rotary Joint

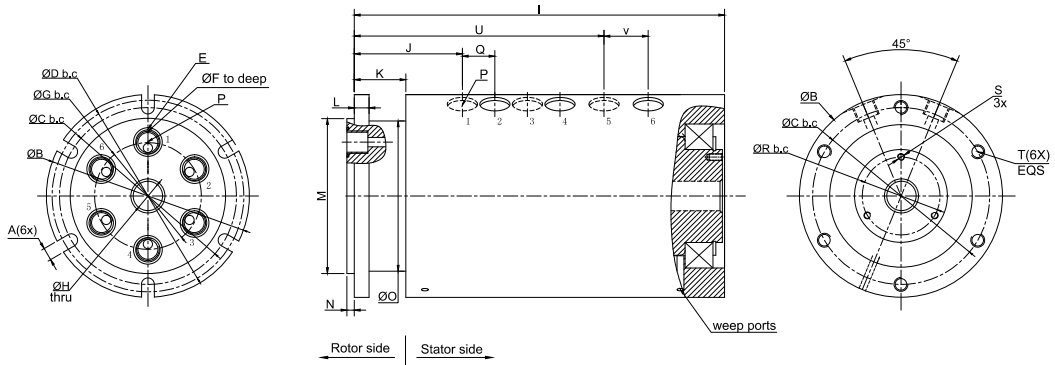
6: 6in 6 out

1: Port size, 1=G1/8", 2=G1/4", 3=G3/8"  
4=G1/2", 5=G5/8", 6=G3/4", 8=G1", 10=G(1+1/4")

Product grade code  
VC General Grade Product Grade  
VD industrial grade  
Default omitted = VC general product level

ID12: Inner hole 12mm

#### MGP6 Series (Multi-function Swivel) Dimensional Drawing



## List

#### MGP6 Series List

Model No	Passages	Port size	Inner hole size	Pressure	Model No	Passages	Port size	Inner hole size	Pressure
MGP61-ID12	6 in 6 out	G1/8"	12mm	0-50MPa	MGP64	6 in 6 out	G1/2"	N/A	0-50MPa
MGP62-ID19	6 in 6 out	G1/4"	19mm	0-50MPa	MGP65	6 in 6 out	G5/8"	N/A	0-50MPa
MGP63-ID19	6 in 6 out	G3/8"	19mm	0-50MPa					

Size	MGP61-ID12	MGP62-ID19	MGP63-ID19	MGP64	MGP65
A	7.14mm	9mm	9mm	9.0mm	11.0mm
B	80.95mm	101.60mm	107.95mm	125.4mm	163.50mm
C	66.68mm	85.73mm	92.08mm	104.78mm	142.88mm
D	76.20mm	92.08mm	100.00mm	117.48mm	152.40mm
E	2-015 O-Ring [14.00mm]	2-017 O-Ring [17.17mm]	2-019 O-Ring [20.35mm]	2-023 O-Ring [26.70mm]	2-026 O-Ring [31.47mm]
F	4.0mm	6.4mm	9.53mm	12.7mm	19.05mm
G	39.67mm	33.32mm	53.98mm	61.90mm	79.38mm
H	12.7mm	19.05mm	19.05mm	N/A	19.05
I	164.7mm	207.6mm	227.7mm	261.8mm	336.1mm
J	61.9mm	70.4mm	72.0mm	81.5mm	90.5mm
K	30.1mm	33.3mm	33.3mm	42.8mm	44.5mm
L	7.92mm	7.92mm	7.92mm	11.10mm	12.70mm
M	60.33mm	73.03mm	82.55mm	96.825mm	120.65mm
N	3.18mm	3.18mm	3.18mm	4.75mm	4.75mm
O	55.6mm	69.9mm	72.2mm	94.5mm	114.3mm
P	G1/8"	G1/4"	G3/8"	G1/2"	G3/4"
Q	14mm	17.5mm	20.60mm	24.56mm	37.72mm
R	18.5	34.9	34.9	N/A	34.90mm
S	M3x0.5	M5x0.8	M5x0.8	N/A	M5x0.8
T	M6x1.0	M8x1.25	M8x1.25	M8x1.25	M10x1.25
U	N/A	146.0mm	159.9mm	185.3mm	N/A
V	N/A	23.06mm	23.16mm	30.12mm	N/A