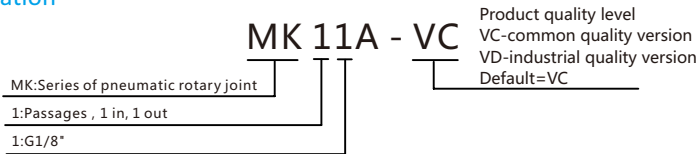


MK11A(1 passages Pneumatic Rotary Union)

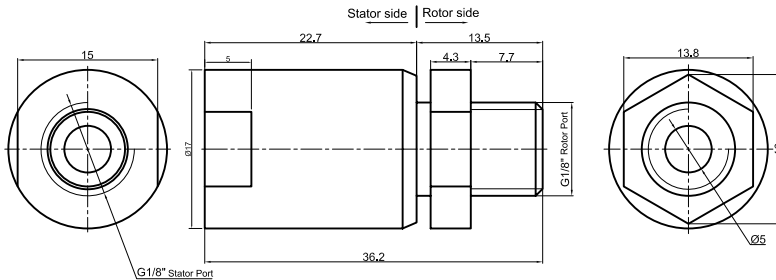


Mk11a series single channel rotary joint, interface size G1 / 8 ", compact structure, light weight, corrosion resistance, stainless steel shaft and aluminum shell All MK series models are equipped with male thread shaft and female thread shell as standard for easy installation.

Part# Explanation



MK11A Dimensions



Part List

Mk 11A Series Parts# List

Part#	Passages	Port Size	Pressure
MK11A	1 in 1 out	G1/8"	1MPa, Vacuum

Specification

Mechanical Data		Rotary Joint Data	
Parameter	Value	Parameter	Value
Working life	Please see the product quality level table	Passage	1 Passage
Rated Rotating Speed	Please see the product quality level table	Max Pressure	Vacuum-1MPa
Working Temperature	-30°C~80°C	Dielectric medium	Air , Vacuum
Operating Humidity	0~85% RH	Torque	Related to the connection size, please see the product selection table
Sealing Element	Please see the product quality level table		
Housing Material	Aluminum alloy / steel		
Protection Grade	IP51		

Product Quality Level Table

Products Level Code	Max Rotating Speed	Working Life	Sealing Element
VC	100RPM	6 Million Revs	Seals of domestic famous brand
VD	300RPM	20 Million Revs	Imported Sealing elemen

Options for custom slip ring

Note: Below special demands can be customized. According, the delivery date will be extended 3 to 15 days; also the cost will be increased 30% to 50%. Most of our basic parts are standard and modular, which can save the cost and lead time.