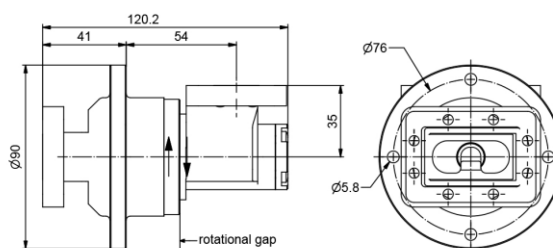


MWG100L-CPR137-G-M4-7.5GHz



Rf channel characteristics

Interfaces	CPR 137 / G with thread M4
Style	L
Frequency range	6.5-7.5 GHz
Peak power , max	10 kw
Average power . max	3.5 kw
VSWR . max	1.15
VSWR WOW . max	0.05
Insertion loss . max	0.1 dB
Insertion loss WOW . max	0.05 dB
Phase WOW . max	2 deg

onditions : Operating altitude if not pressurized , max 3000 m ; Load VSWR , max 2.0

General mechanical data

Differential operating pressure, nom	2×10^5 Pa (2 . 0 bar)
Leakage rate, max	$10 \text{ cm}^3 / \text{minute}$
Rotating speed, max	120 rpm
Life. min	10×10^6 revolutions
Starting torque, max	0.7 Nm@room temperature
Torque during rotation, max	0.8 Nm@room temperature
Case material	aluminum alloy
Case surface finish	chromate conversion coat
Weight, approx	0.8 kg

General environmental conditions Operation

Ambient temperature range	-40°C~+70°C
Relative humidity , max	95%
IP protection level	IP64