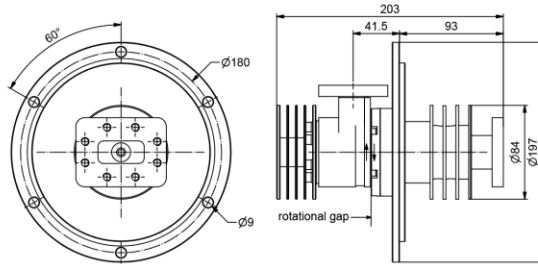
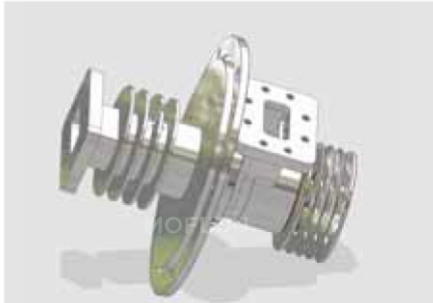


# MWG100L-CPR159-F-7GHz



## Rf channel characteristics

Interfaces	CPR 159 / F
Style	L
Frequency range	5.82-7.0 GHz
Peak power , max	70 KW
Average power . max	10 KW
VSWR . max	1.15
VSWR WOW . max	0.04
Insertion loss . max	0.15 dB
Insertion loss WOW . max	0.04 dB
Phase WOW . max	2 deg

## General mechanical data

Differential operating pressure, nom	0.5X10 <sup>5</sup> Pa(0.5bar)
Leakage rate, max	3 cm <sup>3</sup> /minute
Rotating speed, max	60 rpm
Life. min	10 x 10 <sup>6</sup> revolutions
Starting torque, max	2Nm @ room temperature
Torque during rotation, max	2Nm @ room temperature
Case material	aluminum alloy
Case surface finish	painted black (RAL 9005)
Weight, approx	3 kg

## General environmental conditions Operation

Ambient temperature range	-40°C+70°C
Relative humidity , max	95%
IP protection level	IP64