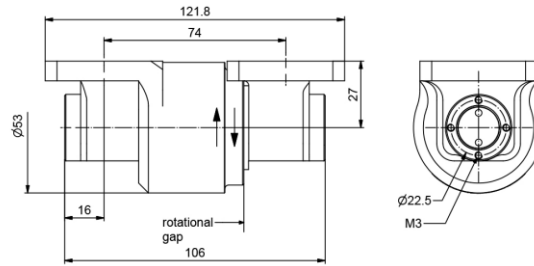


# MWG100U-UBR84-M4-8.6GHz



## Rf channel characteristics

Interfaces	154 IEC UBR84 with thread M4
Style	U
Frequency range	7.0-8.6 GHz
Peak power , max	10 kw
Average power . max	1 KW
VSWR . max	1.15
VSWR WOW . max	0.05
Insertion loss . max	0.15 dB
Insertion loss WOW . max	0.05 dB
Phase WOW . max	2 deg

onditions : Operating altitude if not pressurized , max 3000 m ; Load VSWR , max 2.0

## General mechanical data

Differential operating pressure, nom	$2 \times 10^5$ Pa ( 2 bar )
Leakage rate, max	10 cm <sup>3</sup> / minute
Rotating speed, max	120 rpm
Life. min	20 X 10 <sup>6</sup> revolutions
Starting torque, max	0.6 Nm@room temperature
Torque during rotation, max	0.7 Nm@room temperature
Case material	aluminum alloy
Case surface finish	chromate conversion coat
Weight, approx	0.55 kg

## General environmental conditions Operation

Ambient temperature range	-40°C~+70°C
Relative humidity , max	95%
IP protection level	IP65